

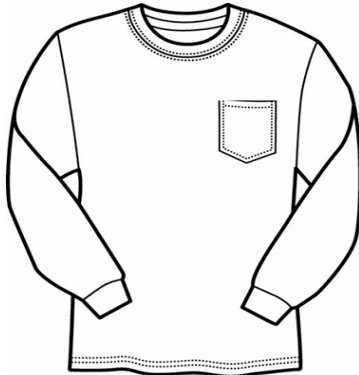


XL 100% COTTON PRESHRUNK
Made in Honduras

STYLE 2410

Ultra Cotton

Adult Long Sleeve T-Shirt with Pocket



Weight	6.1 oz per sq yd	
Content	100% cotton preshrunk jersey knit (see colors for exceptions)	
Features	Double needle 7/8" collar Taped neck and shoulders Double needle, left chest 5-point pocket Rib cuffs Double needle bottom hem Quarter-turned to eliminate center crease	
Sizes	S - 5XL	
Case Packs	S - 2XL	6 dozen
	3XL	3 dozen
	4XL & 5XL	1 dozen
Colors	7	
SKU's	56	

7 colors to 5XL!

Specifications

Size	Width (A)	Length (B)	CB Sleeve (C)
Small	18"	28"	33.5"
Medium	20"	29"	35"
Large	22"	30"	36.5"
X-Large	24"	31"	38"
2X-Large	26"	32"	39.5"
3X-Large	28"	33"	39.5"
4X-Large	30"	34"	40"
5X-Large	32"	35"	40.5"
Tol.	+/- 0.75"	+/- 1"	+/- 1"

