



2021
APPAREL COLLECTION

COLLECTIONS

INDEPENDENT.....	2
AFX.....	18
EXPEDITION.....	26
STANDARD SUPPLY.....	52
PREMIUM.....	74
JERSEY.....	104
YOUTH.....	108
INDEX.....	116
COLOR SWATCHES.....	118



INDEPENDENT
COLLECTION



IND4000 S
IND20PNT

IND5000P

Men's Premium 450gm Heavyweight Cross-Grain Hoodie

Sizes: XS-3XL

13.5oz (450gm) 2-end fleece • ring spun cotton • 100% cotton face yarns on solid colors • 20 singles face yarn • double fleece lined hood • antique silver eyelets • heavy duty 100% cotton alioestring drawcord w/ antique silver tips • double ribbing side panels • reverse coverstitch sewing on all seams • body and hood panels sewn Cross-Grain • 520gm 100% cotton 1x1 ribbing at cuff and waistband • tear away woven neck label



BLACK GREY HEATHER CLASSIC NAVY ALPINE GREEN MAROON DUSTY PINK BONE



The best sweatshirt we've ever made.

Legend

450gm HEAVYWEIGHT

- Double Fleece Lined Hood
- Antique Silver Eyelets
- 180gm/13.5oz Fleece
- Heavy Duty Shearface Drawcords
- Antique Silver Drawcord Tips
- Cross-Grain Body Panels
- Double Layer 1x1 520gm 100% Cotton Ribbing Side Panels
- Reverse Coverstitch On All Seams
- 1x1 520gm 100% Cotton Ribbing



SEVEN CLASSIC COLORS

IND5000C

Men's Premium 450gm Heavyweight Cross-Grain Crew

Sizes: XS-3XL

13.5oz.(450gm) 3-end fleece • ring spun cotton • 100% cotton face yarns on solid colors • 20 singles face yarn • double ribbing side panels • reverse overstretch sewing on all seams • body panels sewn Cross-Grain • 520gm 100% cotton 1x1 ribbing at cuff and waistband • tear-away woven neck label



IND4000

Men's Heavyweight Hooded Pullover

Sizes: XS-3XL (4XL & 5XL available in select colors.)

16oz. (330gsm) cotton/polyester blend fleece • Solid Colors: 70% Cotton/30% Polyester with 100% cotton 32 singles face yarn for supreme durability and softness • Heather Colors: 52% cotton/48% polyester • Camo Colors: 75% cotton/25% polyester with 100% cotton 32 singles face yarn • Safety Colors: 52% cotton/48% polyester • fleece lined hood • split stitch double needle sewing on all seams • twill neck tape • 1x1 ribbing at cuffs and waistband • nickel eyelets • generous fit



BLACK (XS-5XL) CHARCOAL HEATHER (XS-5XL)



SOLID CHARCOAL GUNMETAL HEATHER GREY HEATHER (XS-5XL) WHITE (XS-5XL) NAVY (XS-4XL) SLATE BLUE MAROON



ALPINE GREEN ARMY SADDLE SANDSTONE BONE PEACH LIGHT YELLOW



MINT BLUE AQUA LAVENDER LIGHT PINK CARDINAL RED ROYAL



DARK GREEN GOLD FOREST CAMO TIGER CAMO ARMY CAMO SNOW CAMO BLACK CAMO



NEW! HOUNDSFOOT SAFETY YELLOW SAFETY ORANGE CHARCOAL HEATHER / BLACK CHARCOAL HEATHER / CURRANT GREY HEATHER / BLACK GREY HEATHER / SLATE BLUE



The Original Independent Sweatshirt and the Go-To Blank Sweatshirt for brands all over the world!



IND4000Z

Men's Heavyweight Zip Hood

Sizes: XS-2XL (4XL, 5XL & 6XL available in select markets)

Tissue (220gsm) cotton/polyester blend fleece • Solid Colors: 70% cotton/30% polyester with 100% Cotton 32 singles face yarn for supreme portability and softness • Heather Colors: 52% cotton/48% polyester • Camo Colors: 75% cotton/25% polyester with 100% cotton 32 singles face yarn • fleece lined hood • split stitch double needle sewing on all seams • twill neck tape • 1x1 ribbing at cuffs and waistband • nickel eyelets • #5 nickel locking zipper • generous fit



BLACK
(XS-6XL)

CHARCOAL HEATHER

SOLID CHARCOAL

GUNMETAL HEATHER

GREY HEATHER
(XS-6XL)

WHITE

NAVY
(XS-6XL)



MAROON
(XS-2XL)

ARMY

SANDSTONE

CARDINAL
(XS-2XL)

RED

ROYAL

FOREST CAMO



Men's Midweight Fleece Pant

Size: XS-2XL

It has: (200gsm) cotton/polyester blend fleece • ring spun cotton • elastic waistband with shirring drawcord • 1x1 ribbing at ankle cuffs • sewn eyelets • sewn fly detail • back pocket • jersey lined hand pockets • relaxed fit



BLACK

GREY HEATHER

NEW WHITE

NEW RED

FOREST CAMO

BLACK CAMO

Men's Midweight Fleece Short

Size: XS-2XL

It has: (200gsm) cotton/polyester blend fleece • ring spun cotton • elastic waistband with shirring drawcord • sewn eyelets • sewn fly detail • back pocket • jersey lined hand pockets • relaxed fit • tapered knee opening



BLACK

GREY HEATHER

NEW WHITE

NEW RED

FOREST CAMO

BLACK CAMO



IND40RP

Men's Lightweight Raglan Hooded Pullover

Sizes: XS-3XL

70% (230gm) cotton/polyester blend fleece • raglan sleeves • jersey lined hood • split stitch double needle sewing • full neck tape • 1x1 ribbing at cuffs and waistband • rickel eyelets • slim fit

Screen Printers Please Note: This fabric is not made of 100% cotton face yarn



LIGHTWEIGHT SWEAT WICKING TEAR AWAY RELEASE



HEAVYWEIGHT RIBBED JERSEY TEAR AWAY RELEASE

IND45UVZ

Unisex Heavyweight Varsity Zip Hood

Sizes: XS-3XL

70% (330gm) cotton/polyester blend fleece • 30 singles cotton/polyester blend face yarn • fleece lined hood • split stitch double needle sewing on all seams • full neck tape • 1x1 jacquard ribbing at cuffs & waistband • gunmetal eyelets • #5 nylon kissing zipper • slim unisex fit



GUNMETAL HEATHER/BLACK
GUNMETAL HEATHER/CHARCOAL HEATHER
GUNMETAL HEATHER/CLASSIC NAVY HEATHER
GUNMETAL HEATHER/BURGUNDY HEATHER
GUNMETAL HEATHER/ARMY HEATHER



CHARCOAL HEATHER/BLACK
CHARCOAL HEATHER/BURGUNDY HEATHER
CHARCOAL HEATHER/ARMY HEATHER



CHARCOAL HEATHER/BLACK
GUNMETAL HEATHER/CHARCOAL HEATHER
BLACK/GUNMETAL HEATHER
CLASSIC NAVY/GUNMETAL HEATHER
CARDINAL/GUNMETAL HEATHER
HUNTER GREEN/GUNMETAL HEATHER



Day Tripper 29L Duffle Bag

Sizes: 20.5" x 10.5" - 29 Liters

10.5oz (260 gm) 100% polyester • waterproof interior PVC coating • carrying handles • removable shoulder strap



BLACK



BLACK / CHECKER STRAPS



POLKA DOT



CHEETAH



BLACK CHEETAH



SOUTHWEST



TIGER CAMO



FOREST CAMO



BLACK CAMO



WHITE CAMO





COLLECTION



AFX90UN

AFX64CRP

Women's Lightweight Crop Hooded Pullover

Sizes: XS-2XL

5.5oz (210gm) pre-laundered cotton/polyester blend fleece • 100% cotton 40 singles face yarn for supreme breathability and softness • split stitch double needle sewing on all seams • 3/8" flat drawcord • twill neck tape • 1x1 ribbing at cuffs • sewn eyelets • tear away neck label



BLACK

NEW! GREY HEATHER

NEW! WHITE

BEIGE



BLUSH

NEW! SAGE

NEW! TIE-DYE
COTTON CANDY

BLACK CAMO



Bold, Fashion-Forward
garment that's fun & stylish.

CROP
HOODIE

AFX90UN

Unisex Lightweight Fitted Hooded Pullover

Sizes: XS-2XL

5.5oz (230gm) pre-shrunk cotton/polyester blend fleece • 100% cotton 40 singles face yarn for supreme durability and softness • unlined hood • split stitch double needle sewing on all seams • twin neck tape • 1x1 ribbing at cuffs, waistband & pocket openings • neck eyelets • plastic tipped white mind-drawcord • slim unisex fit



Classic Styling & Premium Fabric

The best printing fabric in our line.
A screen printers best friend.



Unisex Lightweight Fitted Zip Hood

Sizes: XS-XXL

5.5oz (210gsm) pre-laundered cotton/polyester blend fleece • 100% cotton 40 angles face yarn for superior printability and softness • unlined hood • split stitch double needle sewing on all seams • twill neck tape • 1x1 ribbing at cuffs, waistband & pocket openings • nickel eyelets • #5 white coil closing zipper with rockel pull • blastin' tipped white round drawcord • slim unisex fit



BLACK CHARCOAL HEATHER GUNMETAL HEATHER CLASSIC NAVY SLATE BLUE



SANDSTONE ALPINE GREEN CURRANT RUST DUSTY ROSE MISTY BLUE (XS-XXL)



RED (XS-XXL) COBALT TURQUOISE TANGERINE (XS-XXL) FOREST CAMO BLACK CAMO



Classic Styling & Premium Fabric
The best printing fabric in our line.
A screen printer's best friend.

AFX4000

Men's Lightweight Fitted Hooded Pullover

Sizes: XS-3XL

6.5oz (210gsm) pre-finished cotton/polyester blend fleece • 100% cotton 40 singles face yarn for supreme printability and softness • jersey lined hood • split stitch double needle sewing on all seams • twill neck tape • 1x1 ribbing at cuffs, waistband & pocket openings • nickel eyelets • slim fit



BLACK CHARCOAL HEATHER SOLID CHARCOAL GUNMETAL HEATHER GREY HEATHER WHITE



NAVY ARMY GARNET RED HEATHER TURQUOISE HEATHER



The Best Printing Fabric In Our Line
A screen printer's best friend

AFX4000Z

Men's Lightweight Fitted Zip Hood

Sizes: XS-3XL

6.5oz (210gsm) pre-finished cotton/polyester blend fleece • 100% cotton 40 singles face yarn for supreme printability and softness • jersey lined hood • split stitch double needle sewing on all seams • twill neck tape • 1x1 ribbing at cuffs, waistband & pocket openings • nickel eyelets • #5 nickel kissing zipper • slim fit



BLACK CHARCOAL HEATHER SOLID CHARCOAL GUNMETAL HEATHER WHITE NAVY

Expedition
COLLECTION



EXP54LWP

Men's Lightweight Pullover Windbreaker Anorak Jacket

Sizes: XS-3XL (XXX Available in select colors.)

100% polyester lightweight water resistant fabric • matte finish eyelets and zippers • #4 zipper with zipper pull & rubber zipper pull tab • reversed upper tape • flat mesh hood liner • three panel hood • blizzard neck • self neck tape • pouch pocket • bungee toggle at waistband • elastic cuffs • locker loop in center back neck

Screen Printing Please Note:

This garment is 100% Polyester Poly like any commercial Please do your own laundry.



BLACK



ARMY / BLACK ZIP



SMOKE / BLACK ZIP



AQUA
(XXS-3XL)



BLUSH
(XXX-3XL)



SMOKE / GRAPHITE



CLASSIC NAVY / RED



BLACK CAMO



EXP54LWZ

Men's Lightweight Windbreaker Jacket

Sizes: XS-3XL (XXX Available in select colors.)

112 gm 100% polyester lightweight water resistant fabric • matte finish
 eyelets and zippers • #4 zipper with zipper pull & rubber zipper pull tab •
 reversed zipper tape • fine mesh hood liner • three-panel hood • blizzard
 neck • self neck tape • welt pockets with mesh pocket bags • bungee
 toggle at waistband • elastic cuffs • locker loop in center back-neck

Screen Printed Please Note:
 This garment is 100% Polyester. Poly like all commercial Please do not iron
 inside.



EXP64CRP

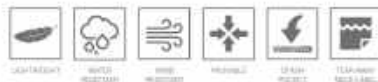
Women's Lightweight Crop Windbreaker

Sizes: XS-2XL

100% 100% polyester, lightweight, water resistant fabric • matte finish
eyelets and zippers • zipper pull & zipper pull string • reversed zipper tape
• fine mesh hood liner • three panel hood • bizzard neck • self neck tape
• bungee toggle at waistband • elastic cuffs • locker loop in center back neck

Screen Printed Please Note:

The garment is 100% Polyester. Poly like any commercial. Please do your own
research.



BLACK



BLUSH / WHITE ZIP



WHITE CAMO



BLACK CAMO



CROP
HOODIE

Bold, Fashion-Forward
garment that's fun & stylish.



Wear it in, Pack it out.
Packable Pocket

EXP52BMR

Men's Lightweight Bomber Jacket

Sizes: XS-3XL

100% 100% polyester lightweight water resistant fabric • 100% polyester ribbing • waterproof pressure resistance: 600 mm • #1 wickin zipper • self neck tape • welt pockets • locker loop in center back

Screen Printing Please Note
This garment is 100% Polyester. Poly like are recommended. Please try our own testing.



BLACK



ARMY



BLACK / WHITE



EXP100PFZ

Men's Hyper-Loft Puffy Jacket

Sizes: XS-3XL

HYPER-LOFT INSULATION



100% nylon exterior shell • 60gm hyper-loft poly fill insulation • 100% polyester lining • #5 reverse coil zippers at chest and pockets • packable pocket with #3 reverse coil zipper • capped elastic sleeve cuff • locker loop • plastic cinch toggle • tear away neck label • concealed chest pocket for embroidery access



BLACK



CONCEALED
CHEST POCKET
EMBROIDERY
ACCESS

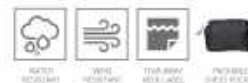


EXP200PFZ

Women's Hyper-Loft Puffy Jacket

Sizes: XS-2XL

HYPER-LOFT INSULATION



100% nylon exterior shell • 60gm hyper-loft poly fill insulation • 100% polyester lining • #5 reverse coil zippers at chest and pockets • packable pocket with #3 reverse coil zipper • capped elastic sleeve cuff • locker loop • plastic cinch toggle • tear away neck label • concealed chest pocket for embroidery access



BLACK



EXP120PFV

Men's Hyper-Loft Puffy Vest

Sizes: XS-3XL

HYPER-LOFT INSULATION



100% nylon exterior shell • 60gm hyper-loft poly fill insulation • 100% polyester lining • #5 reverse coil zippers at chest and pockets • packable pocket with #3 reverse coil zipper • capped elastic arm opening • locker loop • plastic cinch toggle • tear away neck label • concealed chest pocket for embroidery access



BLACK



EXP220PFV

Women's Hyper-Loft Puffy Vest

Sizes: XS-2XL

HYPER-LOFT INSULATION



100% nylon exterior shell • 60gm hyper-loft poly fill insulation • 100% polyester lining • #5 reverse coil zippers at chest and pockets • packable pocket with #3 reverse coil zipper • capped elastic arm opening • locker loop • plastic cinch toggle • tear away neck label • concealed chest pocket for embroidery access



BLACK



EXP95NB

EXP99CNB

Men's Heavyweight Windbreaker Hooded Jacket

Sizes: XS-3XL

100% nylon 220D • waterproof coating 10000 MM • inner pu coating breathability 5000 G/M² • unlined hood • self neck tape • antique brass eyelets (Black/Black Colorway • Matte Black Metal Eyelets) • antique brass 6 snap front closure (Black/Black Colorway • Matte Black Metal Snaps) • elastic cuffs • underarm grommets • drawcord closure at hood and bottom opening • standard fit



Men's Heavyweight Windbreaker Coaches Jacket

Sizes: XS-3XL

100% nylon 220D • waterproof coating 10000 MM • inner pu coating breathability 5000 G/M² • self neck tape • antique brass eyelets (Black/Black Colorway • Matte Black Metal Eyelets) • antique brass 6 snap front closure (Black/Black Colorway • Matte Black Metal Snaps) • elastic cuffs • underarm grommets • drawcord closure at bottom opening • standard fit



EXP94NAW

Men's Heavyweight Water-Resistant Windbreaker Anorak Jacket

Sizes: XS-XXL

100% nylon 230D • waterproof coating: 10,000 MM • inner pu coating
breathability: 5,000 G/M² • chin neck taping • RS din body cord zipper
• matte metal zipper pull • rubber zipper pull tab • zipper garage • fine
mesh hood liner • matte nickel metal eyelets 3 panel hood • asuba
neck • round poly drawstring • hidden snaps inside front pocket flap
• side slit pockets • tightening toggle at waistband • elastic cuffs



BLACK

GRAPHITE

CLASSIC NAVY

FOREST CAMO

BLACK CAMO



EXP35SSZ

Men's Poly-Tech Soft Shell Jacket

Sizes: XS-3XL



73.8oz/400gm total weight + 300 gm 100% water proof polyester shell bonded to graphite colored 110gm micro fleece lining + waterproof coating 2000D MM + #3 Black reverse coil w/w/r resistant zippers + gunmetal zipper pull with black zipper pull tab + 3 panel hood + scuba neck + left chest pocket and welt pockets + zipper garage + toggles at hood and bottom side seams + antique nickel eyelets + media pocket with eyelet

Screen Printers Please Note: Low size only 90% & poly blocker recommended. Keep garment temperature under 300°.



BLACK



CLASSIC NAVY



GRAPHITE



Comfort & Warmth
with concealed embroidery
access for embellishing

EXP70PTZ

EXP80PTZ

Unisex Lightweight Poly-Tech Zip Track Jacket

Sizes: XS-2XL

6.5oz (220gm) 100% poly flience • 2 stripes on raglan sleeves • 7x1 ribbing at cuffs & waistband • #5 contrast coil kissing zipper with nickel pull • twill neck tape • media pocket and eyelet • regular fit

Please Note: Colinway Black/Black has no stripes



Men's Heavyweight Poly-Tech Zip Hood

Sizes: XS-2XL

70oz (237gm) polyester/cotton • water-resistant fleece body with 100% polyester tique panels • 100% anti-pill polyester face • removable zip-off hood with interior cadet collar • 1x1 ribbing at cuffs and waistband • antique nickel eyelets • #5 dtm coil exposed zipper • antique nickel tipped dtm flat drawcord • thumbholes at cuffs • media pocket & eyelet in front welt pocket • standard fit



EXP60PAZ

Women's Lightweight Poly-Tech Zip

Sizes: XS-3XL

5.5oz (190gms) 100% poly fiber • 45 den exposed coil zipper • anti-tuck nickel zipper pull with ultra zipper pull tab • zipper garage • hidden stash pocket • thumbholes at cuffs • slim fit



BLACK

GUNMETAL HEATHER

WHITE

ASTER BLUE

LAPIS GREEN

CORAL



Moisture Wicking
F A B R I C



EXP90SHZ

Unisex Heavyweight Sherpa Lined Zip Hood

Sizes: XS-2XL



HEAVYWEIGHT SHERPA LINED UNISEX ANTIQUE NICKEL EYELETS ANTIQUE NICKEL TIPPED FLAT DRAWCORD 2 DRAWCORD POCKETS



THUMB TACK METAL HOOK 100% NEW FABRIC

12.3oz total weight • 7.6oz (250gm) pre-laundered cotton/polyester blend french terry • 4.7 oz (160 gm) 100% polyester sherpa lined interior • 32 angles face yarn for superior printability and softness • split stitch double needle sewing • 1x1 ribbing at cuffs & waistband • antique nickel eyelets • antique nickel tipped flat drawcord • 2 drawcord pockets • DTM & 1-Natural • #5 antique nickel exposed zipper • media pocket & eyelet in front pocket • thumbtack at cuffs • ball neck tape • unisex fit



BLACK

CHARCOAL HEATHER



SALT & PEPPER

BURGUNDY HEATHER



NAVY HEATHER

SKY HEATHER



HEAVYWEIGHT SHERPA LINED UNISEX



EXP40SHZ

Men's Heavyweight Sherpa Lined Zip Hood

Sizes: S-4XL

14 oz total weight • 8.5oz (280gm) cotton/polyester blend fleece interior • 5.5 oz (180 gm) 100% polyester sherpa lined interior • 100% cotton 32 angles face yarn for superior printability and softness • split stitch double needle sewing • 1x1 ribbing at cuffs & waistband • antique nickel eyelets • antique nickel tipped flat drawcord • 2 drawcord pockets • DTM & 1-Natural • #5 antique nickel exposed zipper • media pocket & eyelet in front pocket • thumbtack at cuffs • ball neck tape • unisex fit



BLACK/NATURAL



**STANDARD
SUPPLY**

COLLECTION



SS4500

SS1000

Unisex Lightweight Loopback Terry Hooded Pullover

Size: XS-3XL

7.5oz. (250gsm) cotton/polyester blend • loopback terry fabric • 20 single face yarn • antique silver eyelets • double shackle drawcords w/ antique silver metal tips • tall neck tape • tear away neck label • 1x7 ribbing at cuffs & waistband • unisex fit



BLACK

CHARCOAL HEATHER

ATHLETIC HEATHER

WHITE

MISTY BLUE

ROSE



INDIGO

PORT

OLIVE

HARVEST GOLD

SAND

BONE



Double Drawcords!
Ditch the one you don't like, or rock both.



SS1000Z

Unisex Lightweight Loopback Terry Zip Hood

Size: XS-3XL

7.5oz. (250gsm) cotton/polyester blend • loopback terry fabric • 20 singles face yarn • antique silver zipper & zipper pull • antique silver zipper & zipper pull • antique silver eyelets • double shawlcollar • antique silver metal tips • half neck tape • tear away neck label • 1x7 ribbing at cuffs & waistband • unisex fit



BLACK CHARCOAL HEATHER ATHLETIC HEATHER WHITE MISTY BLUE ROSE



INDIGO PORT OLIVE HARVEST GOLD SAND BONE



SS1000C

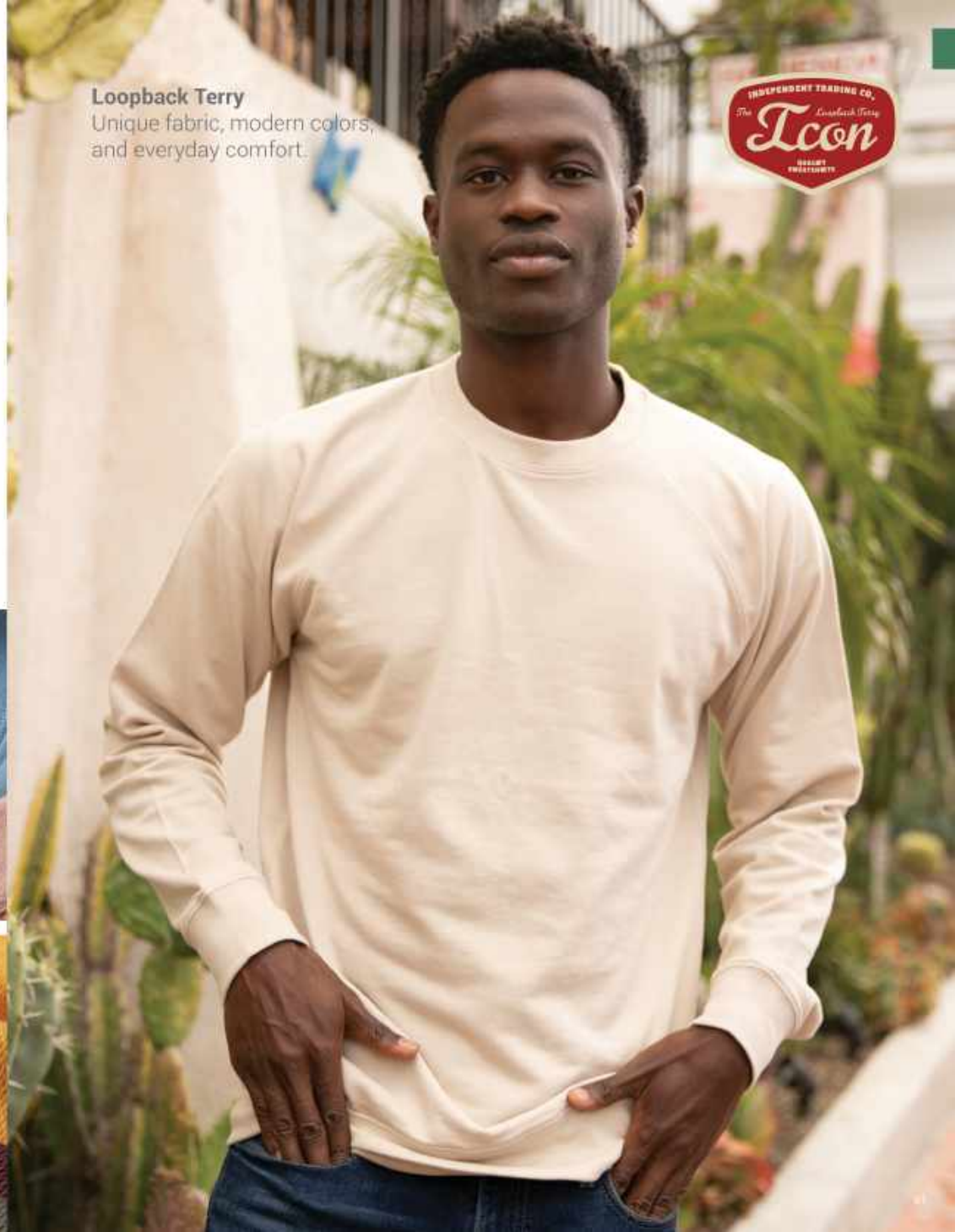
Unisex Lightweight Loopback Terry Crew

Size: XS-3XL

7.5oz. (250g) cotton/polyester blend • loopback terry fabric • 20 single face ribs • 1x1 ribbed neck tape • tear away neck label • 1x1 ribbing at cuffs & waistband • Unisex fit



Loopback Terry
Unique fabric, modern colors,
and everyday comfort.



SS4500

Men's Midweight Hooded Pullover

Sizes: XS-2XL (4XL & 5XL available in select colors.)

Fl. Size: (280gsm) cotton/polyester blend fleece • Split Colors & Gunmetal Heather: 80% cotton/20% polyester with 100% cotton 20 singles face yarn for supreme print ability and softness • Grey Heather: 75% cotton/25% polyester • All other Heather Colors: 55% cotton/45% polyester • jersey lined hood • split stitch double needle sewing on all seams • 1 1/2" neck tape • 1x1 ribbing at cuffs & waistband • metal eyelets • standard fit



Best Value Midweight Hoodie
Great price, great quality, deep inventory, and available in many colors.



SS4500Z

Men's Midweight Zip Hood

Sizes: XS-2XL

II Size: (180gsm) cotton/polyester blend fleece • Spald Colors & Gunmetal Heather: 60% cotton/20% polyester with 100% cotton 20 singles face yarn • Grey Heather: 75% cotton/25% polyester • All other Heather Colors: 65% cotton/40% polyester • jersey lined hood • suit stitch ribbed neckline sewing on all seams • full neck tape • 1x1 ribbing at cuffs & waistband • metal eyelets • #5 metal kissing zipper • standard fit



BLACK CHARCOAL HEATHER SOLID CHARCOAL GUNMETAL HEATHER GREY HEATHER WHITE



NAVY CLASSIC NAVY HEATHER (XS-2XL) MAROON ALPINE GREEN ARMY



ARMY HEATHER (XS-2XL) SANDSTONE ROYAL (XS-2XL) SAFETY YELLOW FOREST CAMO



SS3000

Men's Midweight Crew Neck

(Sizes: XS-2XL (4XL & 5XL available in select colors.)

Fit: Slim (780cm) • cotton/polyester blend fleece • Solid Colors: 80% cotton/20% polyester with 100% cotton 20 single face yarn • Grey Heather: 75% cotton/25% polyester • All other Heather Colors: 55% cotton/45% polyester • split stitch double needle sewing on all seams • twill neck tape • 1/2" ribbing at collar, cuffs and waistband • standard fit



BLACK (XS-5XL) CHARCOAL HEATHER GUNMETAL HEATHER GREY HEATHER (XS-5XL) WHITE (XS-5XL)



CLASSIC NAVY (XS-5XL) CLASSIC NAVY HEATHER ARMY ARMY HEATHER MAROON SANDSTONE



RED DARK GREEN ROYAL HEATHER MINT LIGHT PINK FOREST CAMO



SS008

NEW

Women's Midweight Hooded Pullover

Sizes: XS-2XL

It Size: (200gsm) cotton/polyester blend fleece • Solid Colors: 80% cotton/20% polyester with 100% cotton 20 singles face yarn for supreme print ability and softness • Grey Heather: 75% cotton/25% polyester • Charcoal Heather: 55% Cotton/45% Polyester • jersey lined hood • split stitch double needle sewing on all seams • hilt neck tape • 1x1 ribbing at cuffs & waistband • worn eyelets • tear away neck label • standard fit



NEW! BLACK

NEW! CHARCOAL HEATHER

NEW! GREY HEATHER

NEW! WHITE



Best Value Midweight Hoodie
Great price & great quality.

SS650

Women's Lightweight Hooded Pullover

Sizes: XS-2XL

5.5oz (220gsm) cotton/polyester blend fleece • cotton/polyester blend 24-staples face yarn • unlined hood • split elastic double needle sewing • twist neck tape • 1x1 ribbing at cuffs & waistband • metal eyelets • slim fit

Screen-Printers Please Note:

This fabric is not made of 100% cotton face yarn



BLACK

CHARCOAL HEATHER

GUNMETAL HEATHER

WHITE

Misty Blue

DUSTY ROSE

LIGHT BLACKBERRY



SS650Z

Women's Lightweight Zip Hood

Sizes: XS-2XL

5.5oz (155gsm) cotton/polyester blend fleece • cotton/polyester blend 24 singles face yarn • unlined hood • quilt stitch double needle sewing • twill neck tape • 1x1 ribbing at cuffs & waistband • metal eyelets • #8 ultra coil kissing zipper • skin fit

Screen Printers Please Note

This fabric is not made of 100% cotton fiber yarn



BLACK

CHARCOAL HEATHER

GUNMETAL HEATHER

WHITE

MISTY BLUE

DUSTY ROSE

LIGHT BLACKBERRY



SS240

Women's Lightweight Crew Neck

Sizes: XS-2XL

5.5oz (220gsm) cotton/polyester blend fleece • cotton/polyester blend 24-staples face yarn • split stitch double needle sewing • full neck tape • 1x1 ribbing at cuffs & waistband • 1x1 rib capped neckline • slim fit

Screen Printers Please Note:

This fabric is not made of 100% cotton face yarn





NEW PBM4500TD

PRM2500

Women's California Wave Wash Hooded Pullover

Sizes: XS-2XL

7.0oz (236gm) 55% cotton/45% polyester blend-3-needle raglan sleeves
•bird's beak • coverstitch sewing • sewn eyelets • twill neckline • standard fit

Screen-Printers Please Note:
This fabric is not made of 100% cotton face yarn



BLACK

SHADOW

BONE

BLUSH



DUSTY ROSE

MISTY BLUE

SAGE

NEW! FOREST CAMO HEATHER



California Wave Wash
One of a kind fit, feel,
and color tone.



PRM2500Z

Women's California Wave Wash Zip Hood

Sizes: XS-2XL

7.0oz. (220gsm) 55% cotton/45% polyester blend • 3-end fleece • raglan sleeves • blind stitch • coverstitch sewing • sewn eyelets • twill neck tape • antique nickel zipper • standard fit

Screen Printers Please Note
This fabric is not made of 100% cotton face yarn.



PRM2000

Women's California Wave Wash Crew

Sizes: XS-2XL

7.0oz. (220gsm) 55% cotton/45% polyester blend • 3-end fleece • raglan sleeves • blind stitch • coverstitch sewing • standard fit

Screen Printers Please Note
This fabric is not made of 100% cotton face yarn.



BLACK SHADOW MISTY BLUE SAGE DUSTY ROSE BLUSH BONE



BLACK SHADOW MISTY BLUE SAGE DUSTY ROSE BLUSH BONE



California Wave Wash
One of a kind fit, feel,
and color tone.



California Wave Wash
One of a kind fit, feel,
and color tone.



PRM20PNT

Women's California Wave Wash Sweatpant

Sizes: XS-2XL

7.0oz (200gsm) 55% cotton/45% polyester blend • 3-way fleece • blind stitch • coverstitch sewing • elastic waistband with shoestring drawcord • 1x1 ribbing at ankle cuffs • sewn eyelets • waxy lined hand pockets • standard fit

Screen: Pockets Please Note

This fabric is not made of 100% cotton face yarn.



BLACK

SHADOW

NEW BONE

SAGE

FOREST CAMO HEATHER



California Wave Wash

One of a kind fit, feel,
and color tone.



PRM4500

Unisex Midweight Pigment Dyed Hooded Pullover

Sizes: XS-3XL

fit: (300gm) cotton/polyester blend fleece • 100% cotton 20 singles face yarn • jersey lined hood • split stitch double needle sewing on all seams • half neck tape • 1x7 ribbing at cuffs and waistband • sewn eyelets • standard fit



PIGMENT BLACK

PIGMENT MAROON

PIGMENT SLATE BLUE

PIGMENT ALPINE GREEN

PIGMENT SANDSTONE



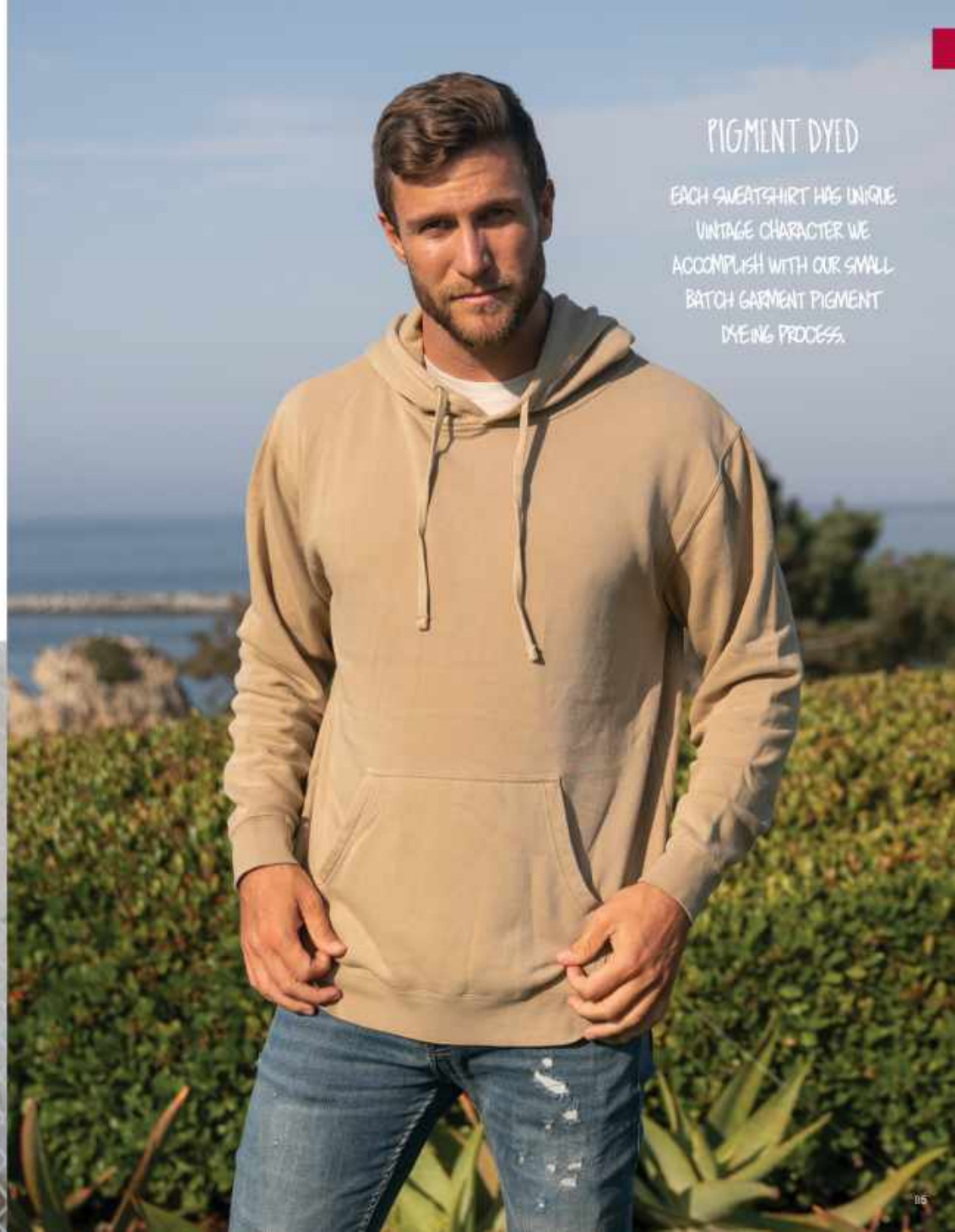
PIGMENT LIGHT BLUE

PIGMENT MINT

PIGMENT PINK

PIGMENT YELLOW

PREPARED FOR DYE



PIGMENT DYED

EACH SWEATSHIRT HAS UNIQUE VINTAGE CHARACTER WE ACCOMPLISH WITH OUR SMALL BATCH GARMENT PIGMENT DYEING PROCESS.

PRM3500

Unisex Midweight Pigment Dyed Crew Neck

Sizes: XS-XXL

ftz: (200gm) cotton/polyester blend fleece • 100% cotton 20 singles face yarn • split stitch double needle sewing up all seams • holl neck tape • 1x1 ribbing at cuffs and waistband • standard fit



PIGMENT BLACK

PIGMENT MAROON

PIGMENT SLATE BLUE

PIGMENT ALPINE GREEN

PIGMENT SANDSTONE



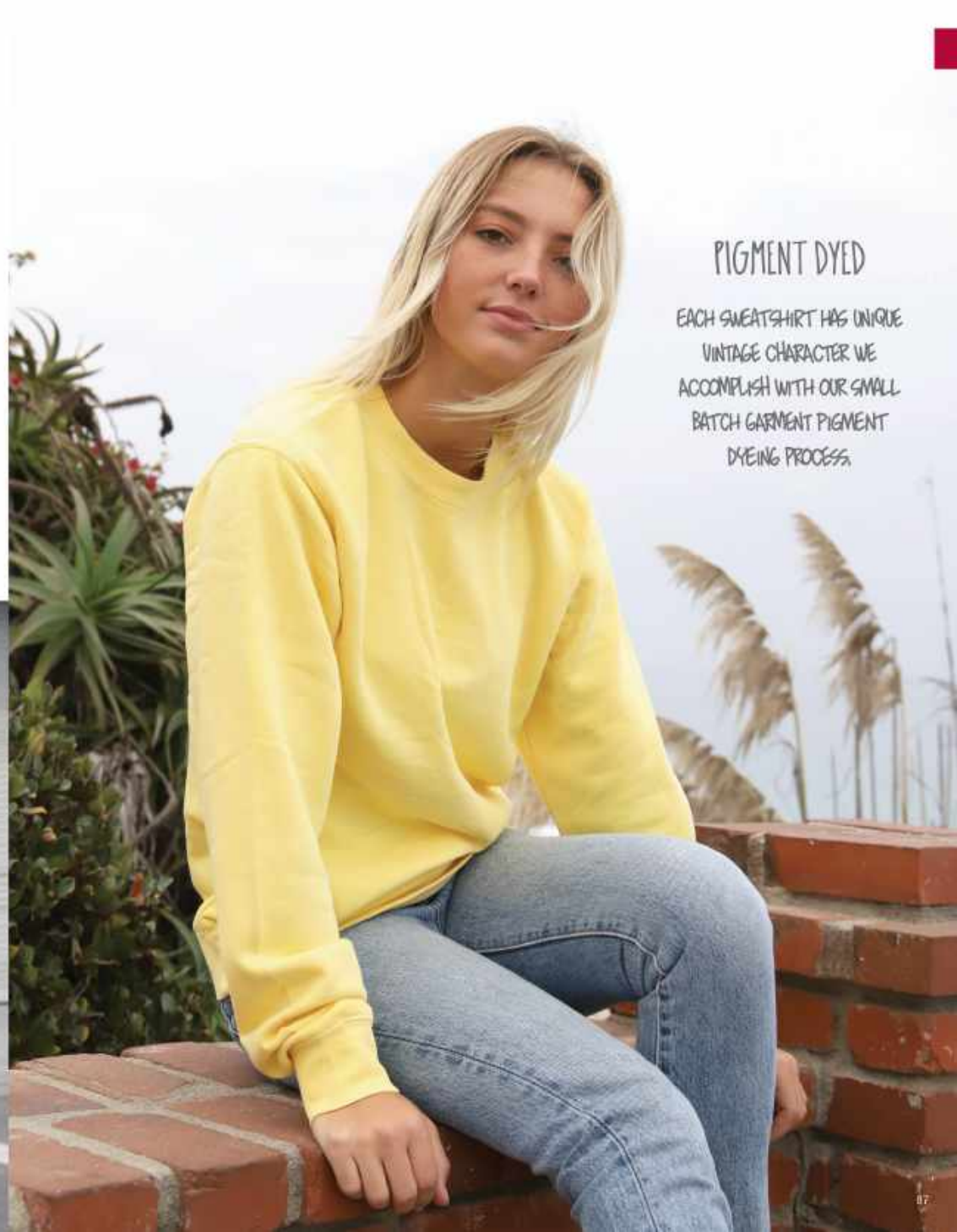
PIGMENT LIGHT BLUE

PIGMENT MINT

PIGMENT PINK

PIGMENT YELLOW

PREPARED FOR DYE



PIGMENT DYED

EACH SWEATSHIRT HAS UNIQUE VINTAGE CHARACTER WE ACCOMPLISH WITH OUR SMALL BATCH GARMENT PIGMENT DYEING PROCESS.

PRM4500TD

NEW

NEW

PRM3500TD

Unisex Midweight Tie Dye Hooded Pullover

Sizes: XS-3XL

Rec: (300gm) cotton/polyester blend fleece • 100% cotton 20 singles face yarn • jersey lined hood • split stitch double needle sewing on all seams • twill neck tape • 1x1 ribbing at cuffs and waistband • sewn eyelets • standard fit



Unisex Midweight Tie Dye Crew Neck

Sizes: XS-3XL

Rec: (300gm) cotton/polyester blend fleece • 100% cotton 20 singles face yarn • split stitch double needle sewing on all seams • twill neck tape • 1x1 ribbing at cuffs and waistband • standard fit



NEW TIE DYE BLACK

NEW TIE DYE NAVY

NEW TIE DYE AQUA BLUE

NEW TIE DYE PINK

NEW TIE DYE COTTON CANDY

NEW TIE DYE SUNSET SWIRL



NEW TIE DYE BLACK

NEW TIE DYE NAVY

NEW TIE DYE AQUA BLUE

NEW TIE DYE PINK

NEW TIE DYE COTTON CANDY

NEW TIE DYE SUNSET SWIRL



PRM4500MW

NEW

Unisex Midweight Mineral Wash Hooded Pullover

Sizes: XS-3XL

fit: (300gsm) cotton/polyester blend fleece + 100% cotton 20 singles face
york jersey lined hood • soft stitchable seams sewing on all seams • hvd
neck tape • 1x7 ribbing at cuffs and waistband • sewn eyelets • standard fit



NEW! MINERAL WASH BLACK



PRM50PTPD

NEW

Men's Pigment Dyed Fleece Pant

Sizes: XS-2XL

9oz (300 gm) cotton/polyester blend • ring spun cotton • 100% cotton 30 singles face yarn • elastic waistband • flat drawcord • 1x ribbing at ankle cuffs • sewn eyelets • sewn fly detail • back pocket • Jersey lined hand pockets • relaxed fit



NEW

PRM50STPD

Men's Pigment Dyed Fleece Short

Sizes: XS-2XL



9oz (300 gm) cotton/polyester blend • ring spun cotton • 100% cotton 30 singles face yarn • elastic waistband • flat drawcord • sewn eyelets • sewn fly detail • back pocket • Jersey lined hand pockets • relaxed fit with tapered knee opening



PRM50PTTD

NEW

Men's Tie Dye Fleece Pant

Sizes: XS-2XL



MENSWEAR



TIE DYE

16oz (200 gm) cotton/polyester blend • 100% cotton 30 singles face yarn
 • elastic waistband with flat drawcord • 1x1 ribbing at ankle cuffs • sewn
 eyelets • sewn fly detail • back pocket • Jersey lined hand pockets • relaxed fit



NEW TIE DYE BLACK

NEW TIE DYE NAVY



NEW TIE DYE AQUA BLUE

NEW TIE DYE PINK

NEW TIE DYE
COTTON CANDYNEW TIE DYE
SUNSET SWIRL

NEW

PRM50STTD

Men's Tie Dye Fleece Short

Sizes: XS-2XL



MENSWEAR



TIE DYE

9oz (260 gm) cotton/polyester blend • 100% cotton 30 singles face yarn
 • elastic waistband with flat drawcord • jersey eyelets • sewn fly detail • back
 pocket • Jersey lined hand pockets • relaxed fit with tapered knee opening



NEW TIE DYE BLACK



NEW TIE DYE NAVY



PRM50PTMW

NEW

Men's Mineral Wash Fleece Pant

Sizes: XS-2XL



9oz (300 gsm) cotton/polyester blend • 100% cotton 3/1 singles face yarn • elastic waistband with flat drawcord • 1x1 ribbing at ankle cuffs • sewn eyelets • sewn fly detail • back pocket • Jersey-lined hand pockets • relaxed fit



MINERAL WASH BLACK



NEW PRM50STMW

Men's Mineral Wash Fleece Short

Sizes: XS-2XL

9oz (300 gsm) cotton/polyester blend • 100% cotton 3/1 singles face yarn • elastic waistband with flat drawcord • sewn eyelets • sewn fly detail • back pocket • Jersey-lined hand pockets • relaxed fit with tapered knee opening



MINERAL WASH BLACK



Unisex Midweight French Terry Hooded Pullover

Sizes: XS-2XL

7.5oz (250gm) pre-laundered cotton/polyester blend french terry • 32 angles face yarn for supreme durability and softness • unlined hood • split stitch double needle sewing • 1x1 ribbing at cuffs, waistband & side panels • antique nickel eyelets • two antique nickel tipped flat drawcords (one contrast • one dirn) • media pocket & eyelet in front pocket • thumbholes at cuffs • twill neck tape • slim unisex fit

Screen Printers Please Note:
This fabric is not made of 100% cotton face yarn.



Unisex Midweight French Terry Zip Hood

Sizes: XS-3XL

7.5oz (250gm) pre-laundered cotton/polyester blend french terry • 32 angles face yarn for supreme durability and softness • unlined hood • split stitch double needle sewing • 1x1 ribbing at cuffs & waistband • antique nickel eyelets • antique nickel tipped flat drawcord • 45 antique nickel exposed zipper • media pocket & eyelet in front pocket • thumbholes at cuffs • twill neck tape • slim unisex fit

Screen Printers Please Note:
This fabric is not made of 100% cotton face yarn.



PRM33SBP

Unisex Midweight Special Blend Raglan Hooded Pullover

Sizes: XS-2XL

11oz. (270gm) cotton/polyester blend • 3D single cotton/polyester blend face yarn • raglan sleeves • unlined /soof • reverse coverstitch sewing • twill rock tape • tail ribbing at cuff, and waistband • sewn eyelets • self fabric side panel inserts • skin unisex fit

Screen-Printers Please Note: This fabric is not made of 100% cotton face yarn



Special Blend



Special Blend



Special Blend

PRM33SBZ

Unisex Midweight Special Blend Raglan Zip Hood

Sizes: XS-3XL

8oz. (270gsm) cotton/polyester blend • 30 angles cotton/polyester blend face yarn • raglan sleeves • unlined hood • reverse coverstitch sewing • twill neck tape • 1x1 ribbing at cuff and waistband • sewn eyelets • self fabric side panel inserts • #6 antique nickel kissing zipper • slim unisex fit

Screen Printers Please Note: This fabric is not made of 100% cotton face yarn.



PRM30SBC

Unisex Midweight Special Blend Raglan Crew

Sizes: XS-3XL

8oz. (270gsm) cotton/polyester blend • 30 angles cotton/polyester blend face yarn • raglan sleeves • reverse coverstitch sewing • twill neck tape • 1x1 ribbing at neck, cuff, and waistband • self fabric side panel inserts • slim unisex fit

Screen Printers Please Note: This fabric is not made of 100% cotton face yarn.



Women's Midweight Special Blend Hooded Pullover Dress

Sizes: XS-2XL

flz: (270gm) cotton/polyester blend fleece • unlined hood • split stitch double needle sewing • 1x1 ribbing at cuffs & waistband • sewn eyelets • crossover neck • two shawlcoll colors • 48in hem neck tape • front pouch pocket • thumbholes at cuffs • slim fit

Screen Printers Please Note:
This fabric is not made of 100% cotton base yarn.



Midweight Special Blend Blanket

One Size: 62" x 78"

flz: (270gm) cotton/polyester special blend fleece • 30 singles cotton/polyester blend face yarn • 1" self hem with tubular elastic topstitch on original four edges

Screen Printers Please Note:
This fabric is not made of 100% cotton base yarn.



JERSEY
COLLECTION



SS150J

SS150J

Men's Lightweight Jersey Hooded Pullover

Sizes: XS-3XL

4.5oz (150gm) cotton/polyester blend jersey • brick red & black are 100% cotton • 30 singles yarn • unlined hood • quilt stitch double needle sewing • twill neck tape • 1x1 ribbing at cuffs & waistband • sewn eyelets • front pouch pocket • slim fit



BLACK

CHARCOAL HEATHER

GUNMETAL HEATHER

CLASSIC NAVY HEATHER

NEW OLIVE

SS150JZ

Men's Lightweight Jersey Zip Hood

Sizes: XS-3XL

4.5oz (150gm) cotton/polyester blend jersey • brick red & black are 100% cotton • 30 singles yarn • unlined hood • quilt stitch double needle sewing • twill neck tape • 1x1 ribbing at cuffs & waistband • sewn eyelets • #5 dbr coil knitting zipper • front pouch pocket • slim fit



BLACK

CHARCOAL HEATHER

GUNMETAL HEATHER

CLASSIC NAVY HEATHER

NEW OLIVE



Youth
COLLECTION



PRM10T58 & PRM10T58Z



PRM10TSB

Toddler Lightweight Special Blend Raglan Hooded Pullover

Sizes: 2T, 4T, 6/6

6.5oz (210gm) cotton/polyester blend • 32 singles cotton/polyester blend face yarn • raglan sleeves • unlined hood • split stitch double needle sewing • twill neck tape • 1x1 ribbing at cuff and waistband

Screen Prints Please Refer
This fabric is not made of 100% cotton face yarn



BLACK NICKEL HEATHER MIDNIGHT HEATHER CRIMSON HEATHER MOSS HEATHER



NICKEL HEATHER/CARBON HEATHER CARBON HEATHER/BLACK NICKEL HEATHER/FOREST CAMO PACIFIC HEATHER POMEGRANATE HEATHER

PRM10TSBZ

Toddler Lightweight Special Blend Raglan Zip Hood

Sizes: 2T, 4T, 6/6

6.5oz (210gm) cotton/polyester blend • 32 singles cotton/polyester blend face yarn • raglan sleeves • unlined hood • split stitch double needle sewing • twill neck tape • #0 atm coil kissing zipper with nickel pull • 1x1 ribbing at cuff and waistband



BLACK NICKEL HEATHER MIDNIGHT HEATHER



NICKEL HEATHER/CARBON HEATHER CARBON HEATHER/BLACK PACIFIC HEATHER POMEGRANATE HEATHER



PRM15YSB

Youth Lightweight Special Blend Raglan Hooded Pullover

Sizes: XS-XL

8.5oz (210gm) cotton/polyester blend • 32 weight cotton/polyester blend face yarn • raglan sleeves • unlined hood • split stitch double needle sewing • twill neck tape • 3x7 ribbing at cuff and waistband

Screen Printer's Please Note:
This fabric is not made of 100% cotton face yarn.



BLACK NICKEL HEATHER MIDNIGHT HEATHER CRIMSON HEATHER MOSS HEATHER



NICKEL HEATHER/CARBON HEATHER CARBON HEATHER/BLACK NICKEL HEATHER/FOREST CAMO PACIFIC HEATHER POMEGRANATE HEATHER

PRM15YSBZ

Youth Lightweight Special Blend Raglan Zip Hood

Sizes: XS-XL



8.5oz (210gm) cotton/polyester blend • 32 weight cotton/polyester blend face yarn • raglan sleeves • unlined hood • split stitch double needle sewing • twill neck tape • #5 stem coil kissing zipper with metal pull • 1x1 ribbing at cuff and waistband

Screen Printer's Please Note:
This fabric is not made of 100% cotton face yarn.



BLACK NICKEL HEATHER MIDNIGHT HEATHER



NICKEL HEATHER/CARBON HEATHER CARBON HEATHER/BLACK PACIFIC HEATHER POMEGRANATE HEATHER

SS4001Y

Youth Midweight Hooded Pullover

Sizes: S-XL



BLACK CHARCOAL HEATHER GREY HEATHER MINT WHITE CLASSIC NAVY

11.5 oz (280 gm) cotton/polyester blend fleece • 100% cotton 20 singles face yarn • split stitch double needle sewing on all seams • jersey lined hood • 1x1 rib neck tape • 1x1 ribbing at cuffs & waistband • no drawcord • standard fit



ROYAL HEATHER RED MAROON ALPINE GREEN



MINT LIGHT PINK FOREST CAMO MINT BLACK CAMO

SS4001YZ

Youth Midweight Zip Hood

Sizes: S-XL

11.5 oz (280 gm) cotton/polyester blend fleece • 100% cotton 20 singles face yarn • jersey lined hood • split stitch double needle sewing on all seams • full neck tape • no drawcord • 1x1 ribbing at cuffs & waistband • #5 metal kissing zipper • standard fit



BLACK CHARCOAL HEATHER



GREY HEATHER NAVY MAROON ALPINE GREEN



RED ROYAL HEATHER MINT LIGHT PINK



EXP15YNB

Youth Heavyweight Windbreaker Jacket

Sizes: XS-XL



700g (24.7oz) 330D • waterproof coating 10,000 MM • fine pu coating breathability 5,000 G/M² • laminated hood • self neck tape • matte black metal 6 snap front closure • elastic cuffs • standard fit



BLACK/BLACK



EXP24YWZ

Youth Lightweight Windbreaker Jacket

Sizes: XS-XL



62 gm 100% polyester lightweight water resistant fabric • matte finish eyelets and zippers • #4 zipper with zipper pull & rubber zipper pull tab • reversed zipper tape • fine mesh hood liner • three panel hood • blizzard neck • self neck tape • welt pockets with mesh pocket flaps • tightening toggle at waistband • elastic cuffs • locker loop in center back neck



BLACK BLACK / GRAPHITE



MAROON / CLASSIC NAVY BLACK / FOREST CAMO



INDEX

INDEPENDENT



INDEPENDENT



IND5000P - P. 4 Men's Premium Heavyweight Hooded Pullover - 7 Colors -
IND5000C - P. 6 Men's Premium Heavyweight Crew - 7 Colors -
IND4000 - P. 8 Men's Heavyweight Hooded Pullover - 37 Colors -
IND4000Z - P. 10 Men's Heavyweight Zip Hood - 14 Colors -



IND20PNT - P. 12 Men's Midweight Fleece Pant - 6 Colors -
IND20SRT - P. 13 Men's Midweight Fleece Short - 8 Colors -
IND40RP - P. 14 Men's Lightweight Raglan Hooded Pullover - 8 Colors -
IND45UVZ - P. 15 Unisex Heavyweight Varsity Zip Hood - 6 Colors -
IND05UBAG - P. 16 Day Tripper 29L Duffel Bag - 10 Colors -
AFX64CRP - P. 20 Women's Lightweight Crop Hooded Pullover - 8 Colors -
AFX90UN - P. 22 Unisex Lightweight Fitted Hooded Pullover - 14 Colors -
AFX90UNZ - P. 24 Unisex Lightweight Fitted Zip Hood - 17 Colors -

AFX

EXPEDITION



AFX4000 - P. 26 Men's Lightweight Fitted Hooded Pullover - 11 Colors -
AFX4000Z - P. 27 Men's Lightweight Fitted Zip Hood - 6 Colors -
EXP54LWP - P. 30 Men's Lightweight Windbreaker Anorak Jacket - 8 Colors -
EXP54LWZ - P. 32 Men's Lightweight Windbreaker Jacket - 22 Colors -
EXP54CRP - P. 34 Women's Lightweight Pullover Crop Windbreaker Jacket - 4 Colors -
EXP52BMR - P. 36 Men's Lightweight Bomber Jacket - 3 Colors -
EXP100PFZ - P. 38 Men's Heavy-Lift Puffy Jacket - 1 Color -
EXP120PFV - P. 38 Men's Heavy-Lift Puffy Vest - 1 Color -



EXP200PFZ - P. 39 Women's Heavy-Lift Puffy Jacket - 1 Color -
EXP220PFV - P. 39 Women's Heavy-Lift Puffy Vest - 1 Color -
EXP95NB - P. 40 Men's Heavyweight Windbreaker Jacket - 7 Colors -
EXP99CNB - P. 41 Men's Heavyweight Windbreaker Coach's Jacket - 7 Colors -
EXP94NAW - P. 42 Men's Water-Resistant Windbreaker Anorak Jacket - 10 Colors -
EXP35SSZ - P. 44 Men's Poly-Tech Soft Shell Jacket - 3 Colors -
EXP70PTZ - P. 45 Unisex Lightweight Poly-Tech Zip Track Jacket - 5 Colors -
EXP80PTZ - P. 47 Men's Heavyweight Poly-Tech Zip Hood - 1 Color -

STANDARD SUPPLY



EXP50PAZ - P. 48 Women's Lightweight Poly-Tech Zip - 6 Colors -
EXP90SHZ - P. 50 Unisex Heavyweight Sherpa Lined Heathered Zip Hood - 6 Colors -
EXP40SHZ - P. 51 Men's Heavyweight Sherpa Lined Zip Hood - 1 Color -
SS1000 - P. 54 Unisex Lightweight Loopback Terry Hooded Pullover - 12 Colors -
SS1000Z - P. 56 Unisex Lightweight Loopback Terry Zip Hood - 12 Colors -
SS1000C - P. 58 Unisex Lightweight Loopback Terry Crew - 12 Colors -
SS4500 - P. 60 Men's Midweight Hooded Pullover - 35 Colors -
SS4500Z - P. 62 Men's Midweight Zip Hood - 16 Colors -



SS3000 - P. 64 Men's Midweight Crew Neck - 17 Colors -
SS008 - P. 66 Women's Midweight Hooded Pullover - 4 Colors -
SS650 - P. 68 Women's Heavyweight Hooded Pullover - 7 Colors -
SS650Z - P. 70 Women's Lightweight Zip Hood - 7 Colors -
SS240 - P. 72 Women's Lightweight Crew Neck - 7 Colors -
PRM2500 - P. 76 Women's California Wash Wash Hooded Pullover - 8 Colors -
PRM2500Z - P. 78 Women's California Wash Wash Zip Hoodie - 7 Colors -
PRM2000 - P. 79 Women's California Wash Wash Crew - 7 Colors -

PREMIUM



PRM20PNT - P. 80 Women's California Wash Wash Fleece Sweatpant - 5 Colors -
PRM4500 - P. 82 Unisex Midweight Pigment Dyed Hooded Pullover - 18 Colors -
PRM3500 - P. 84 Unisex Midweight Pigment Dyed Crew Neck - 18 Colors -
PRM4500TD - P. 86 Unisex Midweight Tie Dye Hooded Pullover - 6 Colors -
PRM3500TD - P. 87 Unisex Midweight Tie Dye Crew Neck - 6 Colors -
PRM4500MW - P. 88 Unisex Midweight Mineral Wash Hooded Pullover - 1 Color -
PRM50PTD - P. 90 Men's Pigment Dyed Fleece Pant - 10 Colors -
PRM50GTD - P. 91 Men's Pigment Dyed Fleece Short - 10 Colors -



PRM50PTD - P. 92 Men's Tie Dye Fleece Pant - 6 Colors -
PRM50GTD - P. 93 Men's Tie Dye Fleece Short - 2 Colors -
PRM50PTMW - P. 94 Men's Mineral Wash Fleece Pant - 1 Color -
PRM50STMW - P. 95 Men's Mineral Wash Fleece Short - 1 Color -
PRM90HT - P. 96 Unisex Midweight French Terry Hooded Pullover - 10 Colors -
PRM90HTZ - P. 97 Unisex Midweight French Terry Zip Hood - 11 Colors -
PRM335BP - P. 98 Unisex Midweight Special Blend Raglan Hooded Pullover - 15 Colors -
PRM335BZ - P. 100 Unisex Midweight Special Blend Raglan Zip Hood - 14 Colors -

JERSEY

YOUTH



PRM335BC - P. 101 Unisex Midweight Special Blend Raglan Crew - 14 Colors -
PRM65DRS - P. 102 Women's Midweight Special Blend Hooded Pullover Dress - 8 Colors -
INDBKTSB - P. 103 Midweight Special Blend Blanket - 6 Colors -
SS150J - P. 106 Men's Lightweight Jersey Hooded Pullover - 8 Colors -
SS150JZ - P. 107 Men's Lightweight Jersey Zip Hood - 6 Colors -
PRM10TSB - P. 110 Toddler Lightweight Special Blend Raglan Hooded Pullover - 10 Colors -
PRM10TSBZ - P. 111 Toddler Lightweight Special Blend Raglan Zip Hood - 1 Color -
PRM15YSB - P. 112 Youth Lightweight Special Blend Raglan Hooded Pullover - 10 Colors -



PRM15YSBZ - P. 113 Youth Lightweight Special Blend Raglan Zip Hood - 7 Colors -
SS4001Y - P. 114 Youth Midweight Hooded Pullover - 13 Colors -
SS4001YZ - P. 114 Youth Midweight Zip Hood - 10 Colors -
EXP15YNB - P. 115 Youth Heavyweight Windbreaker Jacket - 1 Color -
EXP24YWZ - P. 115 Youth Lightweight Windbreaker Jacket - 2 Colors -

COLOR SWATCH LIBRARY

BASIC FLEECE



BASIC FLEECE (CONTINUED)



LOOPBACK TERRY - SS1000, SS1000Z & SS1000C



CALIFORNIA WAVE WASH - PRM2500, PRM2500Z, PRM2000 & PRM20PNT



SPECIAL BLEND - PRM305BC, PRM335BP, PRM335BZ, PRM1075B, PRM1075BZ, PRM15YSB, PRM15YSBZ & INDBK15B



PIGMENT DYE - PRM3500 & PRM4500



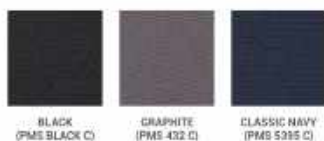
TIE DYE - PRM4500TD, PRM50PTTD, PRM50STTD



MINERAL WASH - PRM4500MW, PRM50PTMW, PRM50STMW



WATER RESISTANT SOFT SHELL - EXP35SSZ



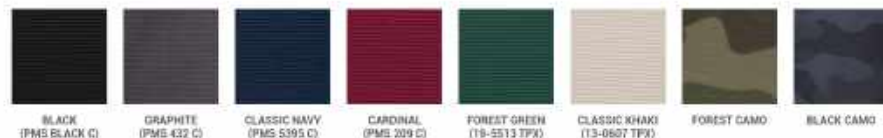
WATER RESISTANT POLY-TECH - EXP60PAZ, EXP70PTZ & EXP80PTZ



LIGHTWEIGHT WINDBREAKER - EXP94LWZ, EXP64LWP, EXP52BMR & EXP64CRP



WATER RESISTANT NYLON - EXP95NB, EXP99CNB & EXP94NAW



WATERPROOF POLYESTER - INDDUFBAG





INDEPENDENT TRADING COMPANY
QUALITY APPAREL.

2021