

NEW COLORS TO EXPLORE!



2021  
CATALOG



**looks we love**







# #1 INFANT AND TODDLER

# brand





# table of contents

<b>005</b>	Kid's 2-Ply Face Mask <b>(NEW STYLE!)</b> .....	6	<b>3301</b>	Toddler Cotton Jersey Tee .....	38
<b>3321</b>	Toddler Fine Jersey Tee <b>(NEW COLORS!)</b> .....	10	<b>3311</b>	Toddler Long Sleeve Cotton Jersey Tee .....	38
<b>3391</b>	Toddler Harborside Mélange Jersey Tee .....	11	<b>1111</b>	Toddler Cape .....	39
<b>3080</b>	Toddler Premium Jersey Tee .....	11	<b>3326</b>	Toddler Pullover Fleece Hoodie .....	42
<b>3322</b>	Infant Fine Jersey Tee <b>(NEW COLORS!)</b> .....	11	<b>3446</b>	Infant Zip Fleece Hoodie .....	43
<b>3302</b>	Toddler Long Sleeve Fine Jersey Tee .....	12	<b>3346</b>	Toddler Zip Fleece Hoodie .....	43
<b>3032</b>	Toddler Retro Ringer Fine Jersey Tee .....	12	<b>3317</b>	Toddler Fleece Sweatshirt .....	44
<b>3316</b>	Toddler Girls' Fine Jersey Tee .....	12	<b>3379</b>	Toddler Harborside Mélange French Terry Crew Neck w/ Elbow Patches .....	45
<b>3329</b>	Toddler Girls' Ruffle Neck Fine Jersey Tee .....	13	<b>201Z</b>	Toddler Long Sleeve Baby Rib Pajama Top .....	48
<b>5323</b>	Toddler Baby Rib Dress .....	16	<b>202Z</b>	Toddler Baby Rib Pajama Pant .....	48
<b>5320</b>	Infant Baby Rib Dress .....	16	<b>101Z</b>	Infant Long Sleeve Baby Rib Pajama Top .....	49
<b>5379</b>	Toddler Girls' Harborside Mélange French Terry Twirl Dress .....	17	<b>102Z</b>	Infant Baby Rib Pajama Pant .....	49
<b>3037</b>	Toddler Football Fine Jersey Tee .....	20	<b>1110</b>	Infant Premium Jersey Blanket .....	52
<b>4437</b>	Infant Football Fine Jersey Bodysuit .....	20	<b>4408</b>	Infant Premium Jersey Wearable Blanket .....	52
<b>3330</b>	Toddler Baseball Fine Jersey Tee .....	21	<b>4406</b>	Infant Baby Rib Layette.....	53
<b>4430</b>	Infant Baseball Fine Jersey Bodysuit .....	21	<b>3400</b>	Infant Baby Rib Tee .....	54
<b>4400</b>	Infant Baby Rib Bodysuit .....	27	<b>8310</b>	Infant Baby Rib Pant .....	54
<b>4424</b>	Infant Fine Jersey Bodysuit <b>(NEW COLORS!)</b> .....	28	<b>4451</b>	Infant Baby Rib Cap .....	54
<b>4491</b>	Infant Harborside Mélange Jersey Bodysuit .....	29	<b>4453</b>	Infant Baby Rib Bow Cap .....	55
<b>4418</b>	Infant Character Hood Bodysuit .....	30	<b>1002</b>	Infant Bow Tie Bib .....	58
<b>4407</b>	Infant Baby Rib Bow Tie Bodysuit .....	31	<b>1005</b>	Infant Premium Jersey Bib .....	59
<b>4432</b>	Infant Retro Ringer Fine Jersey Bodysuit .....	32	<b>1003</b>	Infant Contrast Trim Terry Bib .....	59
<b>4480</b>	Infant Premium Jersey Bodysuit .....	33	<b>1004</b>	Infant Contrast Trim Premium Jersey Bib .....	59
<b>4486</b>	Infant Premium Jersey T-Romper .....	33	<b>1014</b>	Infant Terry Burp Cloth .....	60
<b>4411</b>	Infant Long Sleeve Baby Rib Bodysuit .....	34	<b>1012</b>	Infant Premium Jersey Bandana Bib .....	61
<b>4412</b>	Infant Baby Rib Coverall .....	34	<b>1013</b>	Infant/Toddler Character Hood Towel .....	63
<b>4429</b>	Infant Ruffle Fine Jersey Bodysuit .....	35			
<b>4422</b>	Infant Tutu Baby Rib Bodysuit .....	35			
<b>3401</b>	Infant Cotton Jersey Tee .....	38			

# 2021 new style!

## 005 KIDS 2-PLY FACE MASK

100% combed ring spun cotton fine jersey.  
2-Ply. Single needle ribbed binding. Reusable.

**Sizes: OSFA  
(Recommended for ages 4-9 years)**

**Solid Colors:** Black, White/Black, White/White

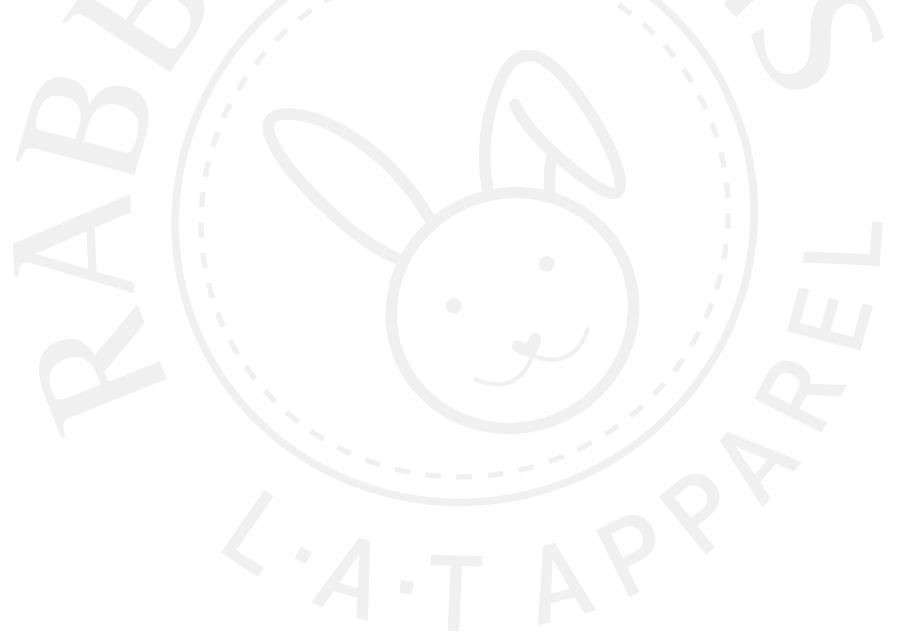
**Care:** Wash before wearing. 100% breathable  
2-ply cotton holds up to extended washes and wear.  
Wash to sanitize after wearing. Dry completely in dryer  
for form fit after each use. Individuals should be careful  
not to touch eyes, nose and mouth when removing face  
mask and wash hands immediately after removing.

**Disclaimer:** Cloth face coverings should not be placed on  
young children under age 4, anyone who has trouble  
breathing, or is unconscious, incapacitated or otherwise unable  
to remove the mask without assistance. These masks are not  
medical grade and are not to take the place of the N95 masks.  
They are not suitable for use in a surgical setting or where  
there would be significant exposure to liquid, bodily or other  
hazardous fluids, use in a clinical setting, or use in the presence  
of a high-intensity heat source or flammable gas. Wearing a  
mask is not guaranteed to prevent transmission of disease and  
is not a substitute for other recommended disease-avoidance  
measures. For guidance on usage, consult advice from the  
Centers for Disease Control (CDC), available at [www.cdc.gov](http://www.cdc.gov).



**AVAILABLE IN 3 COLORS!**





**2021**  
**new colors!**



**COYOTE BROWN**

**3321 • 4424**



**PRO PURPLE**

**3321 • 4424**



**ROUGE**

**3321 • 4424**



**SALTWATER**

**3321 • 4424**



**STORM CAMO**

**3321 • 3322 • 4424**



**ringspun**



**RINGER**

**mélange**



**RUFFLES**



**VINTAGE**

**long  
sleeve**





tee time

# tees for totally cool tots

## 3321 TODDLER FINE JERSEY TEE

4.5 oz. 100% combed ringspun cotton fine jersey (Ash is 98/2; CVC Colors are 60/40; Heather is 90/10 combed ringspun cotton/polyester). Ash and White are sewn with 100% cotton thread. Topstitched ribbed collar. Shoulder-to-shoulder self-fabric back neck tape. Double needle sleeves and bottom hem. Side seam construction. EasyTear™ label. CPSIA compliant tracking label in side seam.

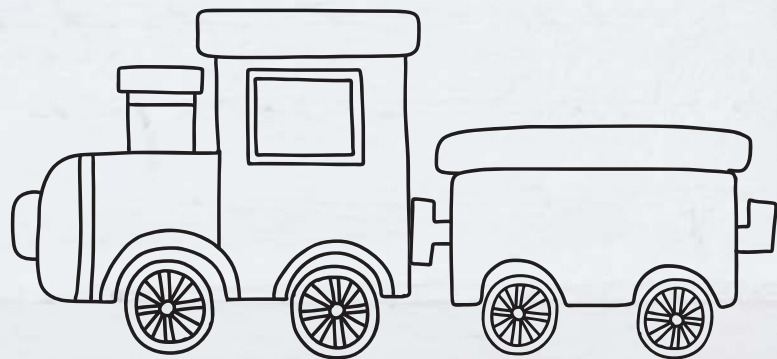
**Fit: Toddler Unisex**

**Sizes: 2, 3, 4, 5/6, 7**

**Solid Colors:** Apple, Ash, Ballerina, Black, Butter, Caribbean, Carolina Blue, Charcoal, Chill, Cobalt, **Coyote Brown**, Forest, Garnet, Gold, Heather, Hot Pink, Indigo, Kelly, Key Lime, Lavender, Light Blue, Mauvelous, Military Green, Natural, Natural Heather, Navy, Orange, Papaya, Pink, **Pro Purple**, Purple, Raspberry, Red, **Rouge**, Royal, **Saltwater**, Silver, Titanium, Turquoise, White, Yellow

**CVC Colors:** Blended White, Granite Heather, **Storm Camo**, Vintage Burgundy, Vintage Camo, Vintage Green, Vintage Hot Pink, Vintage Indigo, Vintage Military Green, Vintage Navy, Vintage Orange, Vintage Purple, Vintage Red, Vintage Royal, Vintage Smoke, Vintage Turquoise

**(RED DENOTES NEW COLORS!)**







### 3391 TODDLER HARBORSIDE MÉLANGE JERSEY TEE

4.5 oz. 65% polyester/35% combed ringspun cotton Harborside Mélange jersey. Topstitched ribbed collar. Cotton twill back neck tape. Double needle sleeves and bottom hem. Flatlock stitched side seams. Side seam construction. EasyTear™ label. CPSIA compliant tracking label in side seam.

**Fit: Toddler Unisex**

**Sizes: 2, 3, 4, 5/6, 7**

**Colors:** Caribbean Mélange, Gray Mélange, Mauvelous Mélange, Military Green Mélange, Navy Mélange, Papaya Mélange, Purple Mélange, Red Mélange, Royal Mélange, Smoke Mélange

### 3080 TODDLER PREMIUM JERSEY TEE

5.5 oz. 100% combed ringspun cotton premium jersey. (CVC Colors are 60/40; Heather is 90/10 combed ringspun cotton/polyester) White is sewn with 100% cotton thread. Topstitched ribbed collar. Shoulder-to-shoulder self-fabric back neck tape. Double needle sleeves and bottom hem. Side seam construction. EasyTear™ label. CPSIA compliant tracking label in side seam.

**Fit: Toddler Unisex**

**Sizes: 2, 3, 4, 5/6**

**Solid Colors:** Black, Butter, Caribbean, Charcoal, Cobalt, Heather, Mint, Natural, Natural Heather, Navy, Pink, Red, Royal, Titanium, White

**CVC Colors:** Vintage Burgundy, Vintage Purple, Vintage Smoke

### 3322 INFANT FINE JERSEY TEE

4.5 oz. 100% combed ringspun cotton fine jersey (Ash is 98/2; CVC Colors are 60/40; Heather is 90/10 combed ringspun cotton/polyester). Ash and White are sewn with 100% cotton thread. Topstitched ribbed collar. Shoulder-to-shoulder self-fabric back neck tape. Double needle sleeves and bottom hem. Side seam construction. EasyTear™ label. CPSIA compliant tracking label in side seam.

**Fit: Infant Unisex**

**Sizes: 6, 12, 18, 24 months**

**Solid Colors:** Apple, Ash, Black, Butter, Caribbean, Carolina Blue, Charcoal, Chill, Cobalt, Forest, Garnet, Gold, Granite Heather, Heather, Hot Pink, Indigo, Kelly, Key Lime, Lavender, Light Blue, Mauvelous, Military Green, Natural, Natural Heather, Navy, Orange, Pink, Purple, Raspberry, Red, Royal, Titanium, Turquoise, White, Yellow

**CVC Colors:** Granite Heather, **Storm Camo**, Vintage Camo, **Vintage Navy**, **Vintage Red**

**(RED DENOTES NEW COLORS!)**





### 3302 TODDLER LONG SLEEVE FINE JERSEY TEE

4.5 oz. 100% combed ringspun cotton fine jersey (CVC Colors are 60/40; Heather is 90/10 combed ringspun cotton/polyester). White is sewn with 100% cotton thread. Topstitched ribbed collar. Shoulder-to-shoulder self-fabric back neck tape. Ribbed cuffs. Double needle bottom hem. Side seam construction. EasyTear™ label. CPSIA compliant tracking label in side seam.

**Fit: Toddler Unisex**

**Sizes: 2, 3, 4, 5/6**

**Solid Colors:** Black, Charcoal, Heather, Hot Pink, Kelly, Light Blue, Navy, Pink, Red, Royal, Titanium, White  
**CVC Colors:** Granite Heather, Vintage Smoke



### 3032 TODDLER RETRO RINGER FINE JERSEY TEE

4.5 oz. 100% combed ringspun cotton fine jersey (CVC Colors are 60/40; Heather is 90/10 combed ringspun cotton/polyester). Contrast ribbed collar and sleeve openings. Self-fabric back neck tape. Contrast topstitched self-fabric stripe on shoulders. Double needle bottom hem. Side seam construction. EasyTear™ label. CPSIA compliant tracking label in side seam.

**Fit: Toddler Unisex**

**Sizes: 2, 3, 4, 5/6**

**Solid Colors (Body/Trim):** Black/White, Heather/White, Navy/White, Red/White, Royal/White, White/Black  
**CVC Colors (Body/Neck, Shoulder Stripes and Arm Trim):** Granite Heather/Vintage Smoke, Vintage Green/White



### 3316 TODDLER GIRLS' FINE JERSEY TEE

4.5 oz. 100% combed ringspun cotton fine jersey (Heather is 90/10 combed ringspun cotton/polyester). White is sewn with 100% cotton thread. Topstitched ribbed collar. Self-fabric back neck tape. Double needle sleeves and bottom hem. Side seam construction. EasyTear™ label. CPSIA compliant tracking label in side seam.

**Fit: Toddler Girls'**

**Sizes: 2, 3, 4, 5/6**

**Solid Colors:** Aqua, Black, Chill, Heather, Hot Pink, Key Lime, Lavender, Navy, Orange, Pink, Purple, Raspberry, Red, Royal, White, Yellow



# ruffles

## **3329 TODDLER GIRLS' RUFFLE NECK FINE JERSEY TEE**

4.5 oz. 100% combed ringspun cotton fine jersey. Contrast self-fabric back neck tape. Self-fabric contrast ruffle trim detail at sleeve opening is applied with elastic thread for stretch and comfort. Double needle sleeves and curved bottom hem. Side seam construction. EasyTear™ label. CPSIA compliant tracking label in side seam.

**Fit: Toddler Girls'**

**Sizes: 2, 3, 4, 5/6**

**Solid Colors (Body/Ruffle):**

Ballerina/Mauvelous, Black/White,  
Lavender/Purple, Navy/Red, White/Titanium





solids





# dress up time

french  
terry



stripes



fashion





### 5323 TODDLER BABY RIB DRESS

5.0 oz. 100% combed ringspun cotton 1x1 baby rib (Heather is 90/10 combed ringspun cotton/polyester). White is sewn with 100% cotton thread.  
 ¼" single needle binding on neck. Double needle hem ruched sleeves.  
 ¼" single needle binding on gathered skirt hem. Side seam construction.  
 EasyTear™ label. CPSIA compliant tracking label in side seam.

**Fit: Toddler Girls'**

**Sizes: 2, 3, 4, 5/6**

**Solid Colors:** Ballerina, Black, Heather, White

**Patterns (Top/Skirt):** Ballerina/Ballerina-Mauvelous Stripe,  
 Black/Red-White Dot, Natural/Titanium-Natural Stripe,

Raspberry/Raspberry-White Dot, Red/Red-White Dot, White/Ballerina-White Stripe



### 5320 INFANT BABY RIB DRESS

5.0 oz. 100% combed ringspun cotton 1x1 baby rib (Heather is 90/10 combed ringspun cotton/polyester). White is sewn with 100% cotton thread.  
 ¼" single needle binding on neck. Double needle hem ruched sleeves.  
 ¼" single needle binding on gathered skirt hem. Side seam construction.  
 EasyTear™ label. CPSIA compliant tracking label in side seam.

**Fit: Infant Girls'**

**Sizes: 6, 12, 18, 24 months**

**Solid Colors:** Ballerina, Black, Heather, White

**Patterns (Top/Skirt):** Ballerina/Ballerina-Mauvelous Stripe,  
 Black/Red-White Dot, Natural/Titanium-Natural Stripe,

Raspberry/Raspberry-White Dot, Red/Red-White Dot, White/Ballerina-White Stripe





# harborside mélange

**5379 TODDLER GIRLS'  
HARBORSIDE MÉLANGE  
FRENCH TERRY TWIRL DRESS**

6.2 oz. 68% polyester/32% combed ringspun cotton Harborside Mélange French terry. Cotton twill back neck tape. Back locker patch. Topstitched self-fabric textured loop collar. Rolled, self-fabric textured loop tacked sleeves. Double needle bottom hem. Flatlock stitched side seams. Side seam construction. EasyTear™ label. CPSIA compliant tracking label in side seam.

**Fit: Toddler Girls'**

**Sizes: 2, 3, 4, 5/6**

**Colors:** Caribbean Mélange, Gray Mélange, Mauvelous Mélange, Navy Mélange, Papaya Mélange, Purple Mélange, Red Mélange





game time



BASEBALL



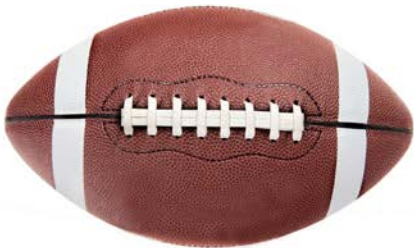
infant



TODDLER



TEAM



football



### 3037 TODDLER FOOTBALL FINE JERSEY TEE

4.5 oz. 100% combed ringspun cotton fine jersey (CVC Colors are 60/40 combed ringspun cotton/polyester). Ribbed collar. Shoulder-to-shoulder self-fabric back neck tape. Coverstitched front and back yoke. Contrast topstitched self-fabric sleeve stripes. Double needle sleeves and bottom hem. Side seam construction. EasyTear™ label. CPSIA compliant tracking label in side seam.

**Fit: Toddler Unisex**

**Sizes: 2, 3, 4, 5/6**

**Solid Colors (Body/Sleeve Stripes):** Black/White, Natural Heather/Granite Heather, White/Black

**CVC Colors (Body/Sleeve Stripes):** Granite Heather/Vintage Smoke, Vintage Burgundy/Blended White, Vintage Camo/Vintage Smoke, Vintage Green/Blended White, Vintage Heather/Blended White, Vintage Hot Pink/Blended White, Vintage Navy/Blended White, Vintage Orange/Blended White, Vintage Purple/Blended White, Vintage Red/Blended White, Vintage Royal/Blended White, Vintage Smoke/Blended White



### 4437 INFANT FOOTBALL FINE JERSEY BODYSUIT

4.5 oz. 100% combed ringspun cotton fine jersey (CVC Colors are 60/40 combed ringspun cotton/polyester). Ribbed collar. Self-fabric back neck tape. Coverstitched front and back yoke. Contrast topstitched self-fabric sleeve stripes. Double needle hem sleeves and ribbed binding on leg opening. Innovative three snap closure. Side seam construction. EasyTear™ label. CPSIA compliant tracking label in side seam.

**Fit: Infant Unisex**

**Sizes: Newborn, 6, 12, 18, 24 months**

**Solid Colors (Body/Sleeve Stripes and Trim):** Black/White, Natural Heather/Granite Heather, White/Black

**CVC Colors (Body/Sleeve Stripes and Trim):** Granite Heather/Vintage Smoke, Vintage Burgundy/Blended White, Vintage Camo/Vintage Smoke, Vintage Green/Blended White, Vintage Heather/Blended White, Vintage Hot Pink/Blended White, Vintage Navy/Blended White, Vintage Orange/Blended White, Vintage Purple/Blended White, Vintage Red/Blended White, Vintage Royal/Blended White, Vintage Smoke/Blended White





### 3330 TODDLER BASEBALL FINE JERSEY TEE

4.5 oz. 100% combed ringspun cotton fine jersey (CVC Colors are 60/40; Heather is 90/10 combed ringspun cotton/polyester). Flatlock stitched contrast ribbed collar and raglan armholes. Contrast double needle hem raglan  $\frac{3}{4}$  sleeves.

Raw serge shirt tail bottom hem. Side seam construction. EasyTear™ label. CPSIA compliant tracking label in side seam.

**Fit: Toddler Unisex**

**Sizes: 2, 3, 4, 5/6**

**Solid Colors (Body/Sleeves):** Black/White, Carolina Blue/Vintage Heather, Natural Heather/Granite Heather, Pink/Vintage Heather, White/Black, White/Navy/Red, White/Vintage Heather

**CVC Colors (Body/Sleeves):** Vintage Heather/Vintage Burgundy, Vintage Heather/Vintage Hot Pink, Vintage Heather/Vintage Navy, Vintage Heather/Vintage Orange, Vintage Heather/Vintage Purple, Vintage Heather/Vintage Red, Vintage Heather/Vintage Royal, Vintage Heather/Vintage Smoke, Vintage Smoke/Granite Heather, Vintage Smoke/Vintage Camo



### 4430 INFANT BASEBALL FINE JERSEY BODYSUIT

4.5 oz. 100% combed ringspun cotton fine jersey (CVC Colors are 60/40 combed ringspun cotton/polyester). Flatlock stitched contrast ribbed collar and raglan armholes. Contrast double needle hem raglan short sleeves. Contrast double needle ribbed binding on leg opening. Innovative three snap closure. Side seam construction. EasyTear™ label. CPSIA compliant tracking label in side seam.

**Fit: Infant Unisex**

**Sizes: Newborn, 6, 12, 18, 24 months**

**Solid Colors (Body/Sleeves and Trim):** Black/White, Carolina Blue/ Vintage Heather, Natural Heather/Granite Heather, Pink/Vintage Heather, White/Black, White/Navy/Red, White/Vintage Heather

**CVC Colors (Body/Sleeves and Trim):** Vintage Heather/Vintage Burgundy, Vintage Heather/Vintage Hot Pink, Vintage Heather/Vintage Navy, Vintage Heather/Vintage Orange, Vintage Heather/Vintage Purple, Vintage Heather/Vintage Red, Vintage Heather/Vintage Royal, Vintage Heather/Vintage Smoke, Vintage Smoke/Granite Heather, Vintage Smoke/Vintage Camo

**long  
sleeve**



**premium  
jersey**



**VINTAGE**

**SOLID**



**stripes**





any time





♥ GET SNAP  
happy.

**Innovative Snap Tape** – For a Softer, Smoother Closure.  
Now on all bodysuits!



## WHAT IS SNAP TAPE?

Snap Tape is an innovative product where plastic snap parts are injection molded to soft tape.

Transitioning all metal snaps to Snap Tape creates so many exciting new features for our garments:



### FUNCTIONALITY

The plastic snaps hold strong, and are much easier to snap and un-snap, improving attachment strength while also improving user experience.



### AN ELEVATED APPEARANCE

The hidden closure features custom matched snap tape to compliment all of our Rabbit Skins colors across all garments with snaps.





**so many choices**



# solids and stripes and dots, oh my!

## 4400 INFANT BABY RIB BODYSUIT

5.0 oz. 100% combed ringspun cotton 1x1 baby rib (CVC Colors are 60/40, Heather is 90/10 combed ringspun cotton/polyester). White is sewn with 100% cotton thread. Flatlock stitched seams. Double needle ribbed binding on lap shoulder neck, shoulders, sleeves and leg opening. Innovative three snap closure. Side seam construction. EasyTear™ label. CPSIA compliant tracking label in side seam.

**Fit: Infant Unisex**

**Sizes: Newborn, 6, 12, 18, 24 months**

**Solid Colors:** Apple, Aqua, Ballerina, Ballerina/Mauvelous, Banana, Black, Brown, Butter, Caribbean, Carolina Blue, Charcoal, Chill, Chill/Indigo, Cobalt, Forest, Garnet, Gold, Grass, Heather, Hot Pink, Indigo, Kelly, Key Lime, Lavender, Lavender/Purple, Light Blue, Mandarin, Maroon, Mauvelous, Mint, Mint/Grass, Natural, Natural Heather, Navy, Orange, Pink, Purple, Raspberry, Red, Royal, Titanium, Turquoise, White, White/Titanium, Yellow

**CVC Colors:** Granite Heather, Granite Heather/ Natural Heather, Granite Heather/Black

**Patterns:** Ballerina-White Dot, Ballerina-White Stripe, Ballerina-Mauvelous Stripe, Ballerina/Ballerina-Mauvelous Stripe/Mauvelous, Ballerina/Ballerina-White Stripe/White, Black-White Dot, Black-White Stripe, Heather-White Dot, Heather-White Stripe, Heather/Heather-White Stripe/White, Kelly-White Stripe, Kelly/Red-White Stripe/Red, Light Blue/Navy-White Stripe/Navy, Navy-White Dot, Navy-White Stripe, Navy/Red-White Stripe/Red, Raspberry-White Dot, Raspberry-White Stripe, Red-White Stripe, Red-White Dot, Red/Red-White Stripe/White, Titanium-Natural Stripe



COLORBLOCK  
STRIPES

COLORBLOCKS

SOLID COLORS

STRIPES

DOTS

CVC COLORS

# fine jersey

## 4424 INFANT FINE JERSEY BODYSUIT

4.5 oz. 100% combed ringspun cotton fine jersey (Ash is 98/2; CVC Colors are 60/40; Heather is 90/10 combed ringspun cotton/polyester). Ash and White are sewn with 100% cotton thread.

Flatlock seams. Double needle ribbed binding on lap shoulder neck, shoulders, sleeves and leg opening.

Innovative three snap closure. Side seam construction.

EasyTear™ label. CPSIA compliant tracking label in side seam.

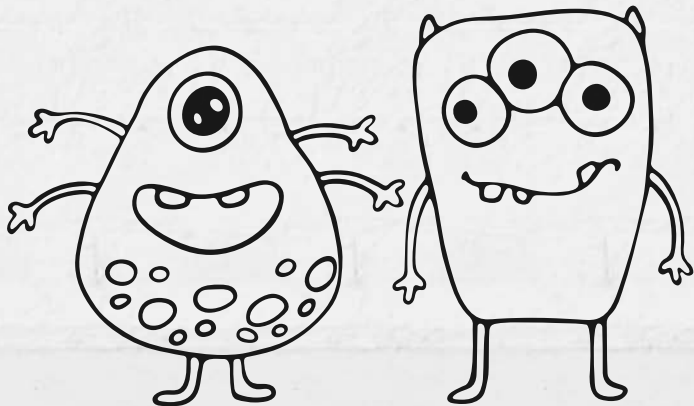
**Fit: Infant Unisex**

**Sizes: Newborn, 6, 12, 18, 24 months**

**Solid Colors:** Apple, Ash, Ballerina, Black, Butter, Caribbean, Carolina Blue, Charcoal, Chill, Cobalt, **Coyote Brown**, Forest, Garnet, Gold, Heather, Hot Pink, Indigo, Kelly, Key Lime, Lavender, Light Blue, Mauvelous, Military Green, Natural, Natural Heather, Navy, Orange, Papaya, Pink, **Pro Purple**, Purple, Raspberry, Red, **Rouge**, Royal, **Saltwater**, Titanium, Turquoise, White, Yellow

**CVC Colors:** Granite Heather, **Storm Camo**, Vintage Burgundy, Vintage Camo, Vintage Green, Vintage Hot Pink, Vintage Indigo, Vintage Military Green, Vintage Navy, Vintage Orange, Vintage Purple, Vintage Red, Vintage Royal, Vintage Smoke, Vintage Turquoise

**(RED DENOTES NEW COLORS!)**





**4491 INFANT HARBORSIDE  
MÉLANGE JERSEY BODYSUIT**

4.5 oz. 65% polyester/35% combed ring spun cotton Harborside Mélangé jersey. Flatlock stitched seams. Double needle ribbed binding on lap shoulder neck, shoulders, sleeves and leg opening. Innovative three snap closure. Side seam construction. EasyTear™ label. CPSIA compliant tracking label in side seam.

**Fit: Infant Unisex**

**Sizes: Newborn, 6, 12, 18, 24 months**

**Colors:** Caribbean Mélangé, Gray Mélangé, Mauvelous Mélangé, Military Green Mélangé, Navy Mélangé, Papaya Mélangé, Purple Mélangé, Red Mélangé, Royal Mélangé, Smoke Mélangé





# all the feels

## 4418 INFANT CHARACTER HOOD BODYSUIT

4.5 oz. 100% combed ringspun cotton fine jersey. Double needle hem 2-piece hood with self-fabric ears. Self-fabric back neck tape. Ribbed collar. Flatlock stitched raglan long sleeves. Double needle hem sleeves. Innovative three snap closure. Side seam construction. EasyTear™ label. CPSIA compliant tracking label in side seam.

**Fit: Infant Unisex**

**Sizes: Newborn, 6, 12, 18 months**

**Solid Colors: Natural/Brown, White/Black**

**CVC Colors: Granite Heather/White**





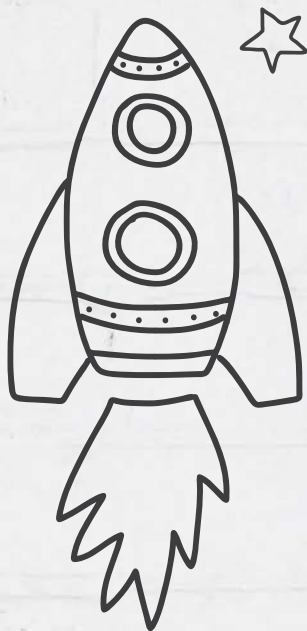
### 4407 INFANT BABY RIB BOW TIE BODYSUIT

5.0 oz. 100% combed ringspun cotton 1x1 baby rib. Flatlock stitched seams. Self-fabric bow tie. Bow tie is tacked on 4 corners and center for added stability. Double needle ribbed binding on lap shoulder neck, shoulders, sleeves and leg opening. Innovative three snap closure. Side seam construction. EasyTear™ label. CPSIA compliant tracking label in side seam.

**Fit: Infant Unisex**

**Sizes: Newborn, 6, 12, 18, 24 months**

**Solid Colors:** Ballerina/White/Ballerina-White Stripe, Black/White, Kelly/White/Red-White Stripe, Light Blue/Navy, Mauvelous/Ballerina, Mint/Grass, Natural Heather/Heather, Purple/Lavender, White/Black, White/Red/Navy-White Stripe



### 4432 INFANT RETRO RINGER FINE JERSEY BODYSUIT

4.5 oz. 100% combed ringspun cotton fine jersey (CVC Colors are 60/40; Heather is 90/10 combed ringspun cotton/polyester). Contrast ribbed collar and sleeve openings. Self-fabric back neck tape. Contrast topstitched self-fabric stripe on shoulders. Contrast double needle ribbed binding on leg opening. Innovative three snap closure. Side seam construction. EasyTear™ label. CPSIA compliant tracking label in side seam.

**Fit: Infant Unisex**

**Sizes: Newborn, 6, 12, 18, 24 months**

**Solid Colors (Body/Neck, Shoulder Stripes and Trim):**  
Black/White, Heather/White, Navy/White, Red/White,  
Royal/White, White/Black

**CVC Colors (Body/Neck, Shoulder Stripes and Trim):**  
Granite Heather/Vintage Smoke, Vintage Green/White



retro ringer



#### 4480 INFANT PREMIUM JERSEY BODYSUIT

5.5 oz. 100% combed ringspun cotton premium jersey. (CVC Colors are 60/40; Heather is 90/10 combed ringspun cotton/polyester) White is sewn with 100% cotton thread. Ribbed collar. Shoulder-to-shoulder self-fabric back neck tape. Double needle hem sleeves. Double needle ribbed binding on leg opening. Innovative three snap closure. Side seam construction. EasyTear™ label CPSIA compliant tracking label in side seam.

**Fit: Infant Unisex**

**Sizes: Newborn, 6, 12, 18, 24 months**

**Solid Colors:** Black, Caribbean, Charcoal, Heather, Mint, Natural, Natural Heather, Navy, Pink, Red, Royal, Titanium, White  
**CVC Colors:** Vintage Burgundy, Vintage Purple, Vintage Smoke



#### 4486 INFANT PREMIUM JERSEY T-ROMPER

5.5 oz. 100% combed ringspun cotton premium jersey. (CVC Colors are 60/40; Heather is 90/10 combed ringspun cotton/polyester) White is sewn with 100% cotton thread. Double needle ribbed binding on lap shoulder neck, shoulders and sleeves. Double needle hem leg openings. Innovative three snap closure. Side seam construction. EasyTear™ label. CPSIA compliant tracking label in side seam.

**Fit: Infant Unisex**

**Sizes: Newborn, 6, 12, 18, 24 months**

**Solid Colors:** Black, Chill, Heather, Light Blue, Mint, Natural, Navy, Pink, Raspberry, Red, White  
**CVC Colors:** Granite Heather





#### 4412 INFANT BABY RIB COVERALL

5.0 oz. 100% combed ringspun cotton 1x1 baby rib (CVC Colors are 60/40; Heather is 90/10 combed ringspun cotton/polyester). White is sewn with 100% cotton thread. Flatlock stitched seams. Double needle ribbed binding on lap shoulder neck, shoulders, sleeves, leg opening and leg cuffs. Innovative snap closure. Side seam construction. EasyTear™ label. CPSIA compliant tracking label in side seam.

**Fit: Infant Unisex**

**Sizes: Newborn, 6, 12, 18, 24 months**

**Solid Colors:** Black, Chill, Heather, Kelly, Light Blue, Mint, Natural, Navy, Pink, Raspberry, Red, White

**CVC Colors:** Granite Heather

#### 4411 INFANT LONG SLEEVE BABY RIB BODYSUIT

5.0 oz. 100% combed ringspun cotton 1x1 baby rib (Heather is 90/10 combed ringspun cotton/polyester). White is sewn with 100% cotton thread. Flatlock stitched seams. Double needle ribbed binding on lap shoulder neck, shoulders, sleeves and leg opening. Innovative three snap closure. Side seam construction. EasyTear™ label. CPSIA compliant tracking label in side seam.

**Fit: Infant Unisex**

**Sizes: Newborn, 6, 12, 18 months**

**Solid Colors:** Black, Heather, Hot Pink, Kelly, Light Blue, Mauvelous, Natural, Natural/Heather, Navy, Pink, Raspberry, Red, Royal, Titanium, White

**Patterns (Body/Sleeves/Trim):** Heather/Heather-White Stripe/White, Kelly/Red-White Stripe/Red







#### 4429 INFANT RUFFLE FINE JERSEY BODYSUIT

4.5 oz. 100% combed ringspun cotton fine jersey. Contrast double needle ribbed binding on lap shoulder and leg opening. Self-fabric contrast ruffle trim detail at sleeve opening is applied with elastic thread for stretch and comfort. Flatlock stitched seams. Innovative three snap closure. Side seam construction. EasyTear™ label. CPSIA compliant tracking label in side seam.

**Fit: Infant Girls'**

**Sizes: Newborn, 6, 12, 18, 24 months**

**Solid Colors (Body/Ruffle and Trim):** Ballerina/Mauvelous, Black/White, Lavender/Purple, Navy/Red, White/Titanium



#### 4422 INFANT TUTU BABY RIB BODYSUIT

5.0 oz. 100% combed ringspun cotton 1x1 baby rib (Heather is 90/10 combed ringspun cotton/polyester). White is sewn with 100% cotton thread. Nylon tulle tutu. Flatlock stitched seams. Double needle ribbed binding on lap shoulder neck, shoulders, sleeves and leg opening. Innovative three snap closure. Side seam construction. EasyTear™ label. CPSIA compliant tracking label in side seam.

**Fit: Infant Girls'**

**Sizes: Newborn, 6, 12, 18, 24 months**

*Note: The melting temperature for nylon is 400° F. It is necessary to cover the nylon tutu when the garment is placed in screen-print dryer.*

**Solid Colors (Body/Tutu):** Black, Black/White, Pink, Raspberry, White, White/Raspberry



play time



CUTENESS  
ALERT!

ZAP!

SUPERHERO POWER!

POW!



### 3301 TODDLER COTTON JERSEY TEE

5.5 oz. 100% cotton jersey (Ash is 99/1; Heather is 90/10 cotton/polyester). Ash and White are sewn with 100% cotton thread. Ribbed collar. Shoulder-to-shoulder self-fabric back neck tape. Double needle sleeves and bottom hem. Side seam construction. EasyTear™ label. CPSIA compliant tracking label in side seam.

**Fit: Toddler Unisex**

**Sizes: 2, 3, 4, 5/6, 7**

**Solid Colors:** Apple, Aqua, Ash, Ballerina, Banana, Black, Brown, Caribbean, Carolina Blue, Charcoal, Chill, Cobalt, Forest, Garnet, Gold, Heather, Hot Pink, Kelly, Key Lime, Lavender, Light Blue, Mandarin, Maroon, Military Green, Mint, Navy, Orange, Pink, Purple, Raspberry, Red, Royal, Turquoise, White, Yellow



### 3401 INFANT COTTON JERSEY TEE

5.5 oz. 100% cotton jersey (Ash is 99/1; Heather is 90/10 cotton/polyester). Ash and White are sewn with 100% cotton thread. Ribbed collar. Shoulder-to-shoulder self-fabric back neck tape. Double needle sleeves and bottom hem. Side seam construction. EasyTear™ label. CPSIA compliant tracking label in side seam.

**Fit: Infant Unisex**

**Sizes: 6, 12, 18, 24 months**

**Solid Colors:** Apple, Aqua, Ash, Ballerina, Banana, Black, Brown, Caribbean, Carolina Blue, Charcoal, Chill, Cobalt, Forest, Garnet, Gold, Heather, Hot Pink, Kelly, Key Lime, Lavender, Light Blue, Mandarin, Maroon, Military Green, Mint, Navy, Orange, Pink, Purple, Raspberry, Red, Royal, Turquoise, White, Yellow

### 3311 TODDLER LONG SLEEVE COTTON JERSEY TEE

5.5 oz. 100% cotton jersey (Heather is 90/10 cotton/polyester). White is sewn with 100% cotton thread. Ribbed collar and cuffs. Shoulder-to-shoulder self-fabric back neck tape. Double needle bottom hem. Side seam construction. EasyTear™ label. CPSIA compliant tracking label in side seam.

**Fit: Toddler Unisex**

**Sizes: 2, 3, 4, 5/6**

**Solid Colors:** Black, Heather, Light Blue, Navy, Orange, Pink, Purple, Red, Royal, White





# be magical

## 1111 TODDLER CAPE

100% satin polyester. Sewn with 100% polyester thread.

Reversible design. VELCRO® brand hook and loop closure. Double needle hem with open bottom.

Side seam construction. EasyTear™ label.

CPSIA compliant tracking label in side seam.

**Fit: Toddler Unisex**

**Sizes: OSFA**

**Solid Colors:** Black/Black, Pink/Silver,  
Red/Navy, Royal/Red, White/White



**hello  
winter!**





snuggle time





good  
vibes  
only

### 3326 TODDLER PULLOVER FLEECE HOODIE

7.5 oz. 60/40 combed ringspun cotton/polyester fleece. White is sewn with 100% cotton thread. Jersey lined double needle hem hood. Topstitched hood and neck. Coverstitched shoulders and armholes. Coverstitched ribbed cuffs and bottom band. Side seam pockets. Side seam construction. EasyTear™ label. CPSIA compliant tracking label in side seam.

**Fit: Toddler Unisex**

**Sizes: 2, 4, 5/6**

**Solid Colors:** Black, Heather, Kelly, Navy, Orange, Pink, Purple, Raspberry, Red, Royal, Turquoise, White

**CVC Colors:** Vintage Hot Pink, Vintage Red, Vintage Royal, Vintage Smoke





### 3346 TODDLER ZIP FLEECE HOODIE

7.5 oz. 60/40 combed ringspun cotton/polyester fleece. White is sewn with 100% cotton thread. Jersey lined double needle hem hood. Topstitched hood, neck and zipper. Coverstitched shoulders and armholes. Coverstitched ribbed cuffs and bottom band. Front pouch pockets. Side seam construction. EasyTear™ label. CPSIA compliant tracking label in side seam.

**Fit: Toddler Unisex**

**Sizes: 2, 4, 5/6**

**Solid Colors:** Black, Heather, Navy, Pink, Red, Royal, White

**CVC Colors:** Vintage Smoke



### 3446 INFANT ZIP FLEECE HOODIE

7.5 oz. 60/40 combed ringspun cotton/polyester fleece. White is sewn with 100% cotton thread. Jersey lined double needle hem hood. Topstitched hood, neck and zipper. Coverstitched shoulders and armholes. Coverstitched ribbed cuffs and bottom band. Front pouch pockets. Side seam construction. EasyTear™ label. CPSIA compliant tracking label in side seam.

**Fit: Infant Unisex**

**Sizes: 6, 12, 18 months**

**Solid Colors:** Black, Heather, Navy, Pink, Red, Royal, White

**CVC Colors:** Vintage Smoke

### 3317 TODDLER FLEECE SWEATSHIRT

7.5 oz. 60/40 combed ringspun cotton/polyester fleece.

White is sewn with 100% cotton thread.

Coverstitched ribbed collar. Coverstitched shoulders and armholes. Coverstitched ribbed cuffs and bottom band. Side seam construction. EasyTear™ label. CPSIA compliant tracking label in side seam.

**Fit: Toddler Unisex**

**Sizes: 2, 3, 4, 5/6, 7**

**Solid Colors:** Black, Heather, Navy, Pink, Red, Royal, White







**3379 TODDLER HARBORSIDE MÉLANGE  
FRENCH TERRY CREW NECK  
W/ ELBOW PATCHES**

6.2 oz. 68% polyester/32% combed ringspun cotton Harborside Mélange French terry. Flatlock stitched self-fabric textured loop collar. Cotton twill back neck tape. Back locker patch. Self-fabric textured loop elbow patches. Flatlock stitched self-fabric cuffs and bottom band. Flatlock stitched side seams. Side seam construction. EasyTear™ label. CPSIA compliant tracking label in side seam.

**Fit: Toddler Unisex**

**Sizes: 2, 3, 4, 5/6**

**Colors:** Gray Mélange, Mauvelous Mélange, Military Green Mélange, Navy Mélange, Purple Mélange, Red Mélange, Smoke Mélange

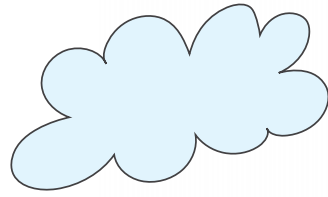


sleepy time

**color  
blocked**



**sweet  
dreams**



Z-Z-Z-Z-Z-Z-Z-Z



**stripes**



SOLIDS





## 201Z TODDLER LONG SLEEVE BABY RIB PAJAMA TOP

5.0 oz. 100% combed ringspun cotton 1x1 baby rib (Heather is 90/10 combed ringspun cotton/polyester). White is sewn with 100% cotton thread. Ribbed collar and cuffs. Self-fabric back neck tape. Double needle bottom hem. Flatlock stitched seams. Side seam construction. EasyTear™ label. CPSIA compliant tracking label in side seam. Wear snug fitting. Not flame resistant. CPSC compliant yellow hang tag swift tacked to garment.

**Fit: Toddler Unisex**

**Sizes: 2, 3, 4, 5/6**

**Solid Colors:** Black, Heather, Hot Pink, Kelly, Kelly/Red, Natural/Heather, Navy, Navy/Red, Orange/Black, Pink, Pink/Red, Red, Royal, White

**Patterns:** Ballerina/Ballerina-White Stripe/White, Black/Red-White Dot/White, Heather/Heather-White Dot/White, Heather/Heather-White Stripe/White, Navy/Navy-White Stripe/White, Red/Red-White Stripe/White

## 202Z TODDLER BABY RIB PAJAMA PANT

5.0 oz. 100% combed ringspun cotton 1x1 baby rib (Heather is 90/10 combed ringspun cotton/polyester). White is sewn with 100% cotton thread. ¾" double needle covered elastic waistband. Ribbed leg cuffs. Flatlock stitched seams. Side seam construction. EasyTear™ label. CPSIA compliant tracking label in side seam. Wear snug fitting. Not flame resistant. CPSC compliant yellow hang tag swift tacked to garment.

**Fit: Toddler Unisex**

**Sizes: 2, 3, 4, 5/6**

**Solid Colors:** Black, Heather, Hot Pink, Kelly, Navy, Pink, Red, Royal, White

**Patterns:** Ballerina-White Stripe/White, Black-White Stripe/White, Heather-White Dot/White, Heather-White Stripe/White, Kelly/White-Stripe/White, Navy/White-Stripe/White, Red-White Dot/White, Red-White Stripe/White





### **101Z INFANT LONG SLEEVE BABY RIB PAJAMA TOP**

5.0 oz. 100% combed ringspun cotton 1x1 baby rib (Heather is 90/10 combed ringspun cotton/polyester). White is sewn with 100% cotton thread. Ribbed collar and cuffs. Self-fabric back neck tape. Double needle bottom hem. Flatlock stitched seams. Side seam construction. EasyTear™ label. CPSIA compliant tracking label in side seam. Wear snug fitting. Not flame resistant. CPSC compliant yellow hang tag swift tacked to garment.

**Fit: Infant Unisex**

**Sizes: 6, 12, 18, 24 months**

**Solid Colors:** Black, Heather, Hot Pink, Kelly, Kelly/Red, Natural/Heather, Navy, Navy/Red, Orange/Black, Pink, Pink/Red, Red, Royal, White

**Patterns:** Ballerina/Ballerina-White Stripe/White, Black/Red-White Dot/White, Heather/Heather-White Dot/White, Heather/Heather-White Stripe/White, Navy/Navy-White Stripe/White, Red/Red-White Stripe/White

### **102Z INFANT BABY RIB PAJAMA PANT**

5.0 oz. 100% combed ringspun cotton 1x1 baby rib (Heather is 90/10 combed ringspun cotton/polyester). White is sewn with 100% cotton thread. ¾" double needle covered elastic waistband. Ribbed leg cuffs. Flatlock stitched seams. Side seam construction. EasyTear™ label. CPSIA compliant tracking label in side seam. Wear snug fitting. Not flame resistant. CPSC compliant yellow hang tag swift tacked to garment.

**Fit: Infant Unisex**

**Sizes: 6, 12, 18, 24 months**

**Solid Colors:** Black, Heather, Hot Pink, Kelly, Navy, Pink, Red, Royal, White

**Patterns:** Ballerina-White Stripe/White, Black-White Stripe/White, Heather-White Dot/White, Heather-White Stripe/White, Kelly/White-Stripe/White, Navy/White-Stripe/White, Red-White Dot/White, Red-White Stripe/White



# essential time





TEES



PANTS



blankets



wearable  
blanket



BIBS

caps



LAYETTES



bodysuits



BOWS





Wearable blankets are recommended by the American Academy of Pediatrics, as they reduce the risk of infant suffocation and sudden infant death syndrome. They are a safer alternative to the standard blanket and allow babies to be comfortable throughout the night.

### 4408 INFANT PREMIUM JERSEY WEARABLE BLANKET

5.5 oz. 100% combed ringspun cotton premium jersey. Self-fabric binding. Velcro® brand hook and loop closure. Side seam construction. Innovative snap closure at side seam for easy on/off. EasyTear™ label. CPSIA compliant tracking label in side seam.

**Fit: Infant Unisex**

**Sizes: Newborn**

**Solid Colors:** Black, Natural, Titanium, White



### 1110 INFANT PREMIUM JERSEY BLANKET

5.5 oz. 100% combed ringspun cotton premium jersey (Granite Heather is 60/40; Heather is 90/10 combed ringspun cotton/polyester). White is sewn with 100% cotton thread. Double needle ribbed binding. 30" wide x 40" tall. EasyTear™ label. CPSIA compliant tracking label in side seam.

**Fit: Infant Unisex**

**Sizes: OSFA**

**Solid Colors (Blanket/Trim):** Black, Banana/Yellow, Granite Heather/Black, Heather/White, Kelly/Red, Lavender/Purple, Light Blue, Mint/Grass, Navy/Red, Orange/Black, Pink, White



#### **4406 INFANT BABY RIB LAYETTE**

5.0 oz. 100% combed ringspun cotton 1x1 baby rib (Heather is 90/10 combed ringspun cotton/polyester.) White is sewn with 100% cotton thread. Coverstitched ribbed binding on lap shoulder neck, shoulders and sleeves. Fold-over mitten cuffs. Coverstitched elastic bottom. Side seam construction. EasyTear™ label. CPSIA compliant tracking label in side seam.

**Fit: Infant Unisex**

**Sizes: Newborn**

**Solid Colors:** Black, Butter, Chill, Heather, Light Blue, Mint, Natural, Pink, Red, Titanium, White



### 4451 INFANT BABY RIB CAP

5.0 oz. 100% combed ringspun cotton 1x1 baby rib (CVC colors are 60/40; Heather is 90/10 combed ringspun cotton/polyester.) White is sewn with 100% cotton thread. Side seam construction. EasyTear™ label. CPSIA compliant tracking label in side seam.

**Fit: Infant Unisex**

**Sizes: OSFA**

**Solid Colors (Hat/Trim):** Ballerina/Mauvelous, Black, Butter, Chill, Chill/Indigo, Heather, Lavender/Purple, Light Blue, Mint, Mint/Grass, Natural, Pink, Red, Titanium, White, White/Titanium

**CVC Colors:** Granite Heather/Black  
**Patterns:** Heather/Heather-White Stripe, Navy/Red-White Stripe

### 3400 INFANT BABY RIB TEE

5.0 oz. 100% combed ringspun cotton 1x1 baby rib (CVC colors are 60/40; Heather is 90/10 combed ringspun cotton/polyester.) White is sewn with 100% cotton thread. Flatlock seams. Double needle ribbed binding on lap shoulder neck and shoulders. Raw serge sleeves and bottom hem. Side seam construction. EasyTear™ label. CPSIA compliant tracking label in side seam.

**Fit: Infant Unisex**

**Sizes: Newborn, 6, 12, 18 months**

**Solid Colors:** Banana, Black, Butter, Chill, Heather, Light Blue, Mauvelous, Mint, Natural, Pink, Titanium, White

### 8310 INFANT BABY RIB PANT

5.0 oz. 100% combed ringspun cotton 1x1 baby rib. White is sewn with 100% cotton thread. 1" double needle covered elastic waistband. Double needle hem leg openings. Side seam construction. EasyTear™ label. CPSIA compliant tracking label in side seam.

**Fit: Infant Unisex**

**Sizes: 6, 12, 18 months**

**Solid Colors:** Black, White





#### **4453 INFANT BABY RIB BOW CAP**

5.0 oz. 100% combed ringspun cotton 1x1 baby rib. White is sewn with 100% cotton thread. Self-fabric contrast bow. Side seam construction. EasyTear™ label. CPSIA compliant tracking label in side seam.

**Fit: Infant Girls'**

**Sizes: OSFA**

**Solid Colors (Hat/Bow):** Ballerina/Mauvelous, Charcoal/Ballerina, Lavender/Purple, Natural/Heather, Navy/Red-White Stripe, Red/Kelly-White Stripe, White/Titanium



**bows**



**BURP CLOTH**



**super soft terry**



**SNACKS!**







dribble time



### **1002 INFANT BOW TIE BIB**

5.5 oz. 100% combed ringspun cotton premium jersey (Heather is 90/10 combed ringspun cotton/polyester).

White is sewn with 100% cotton thread. Contrast self-fabric binding and bow tie. Velcro® brand hook and loop closure. Bow tie is tacked on 4 corners for added stability. EasyTear™ label. CPSIA compliant tracking label in garment.

**Fit: Infant Unisex**

**Sizes: OSFA**

**Solid Colors (Bib/Trim):** Light Blue/Indigo, Mint/Grass, White/Black

**Patterns (Bib/Trim/Bow):** Heather/White/Heather-White Stripe, Kelly/White/Red-White Stripe, Navy/White/Red-White Stripe, Navy/White/Navy-White Stripe



### 1004 INFANT CONTRAST TRIM PREMIUM JERSEY BIB

5.5 oz. 100% combed ringspun cotton premium jersey (CVC Colors are 60/40; Heather is 90/10 combed ringspun cotton/polyester). White is sewn with 100% cotton thread. Contrast self-fabric binding. Velcro® brand hook and loop closure. EasyTear™ label. CPSIA compliant tracking label in garment.

**Fit: Infant Unisex**

**Sizes: OSFA**

**Solid Colors (Bib/Trim):** Banana/Yellow, Heather/White, Kelly/Red, Lavender/Purple, Mint/Grass, Navy/Red, Orange/Black, Pink/Red, White/Black, White/Light Blue, White/Navy, White/Pink, White/Red, White/Royal  
**CVC Colors (Bib/Trim):** Granite Heather/Black

### 1005 INFANT PREMIUM JERSEY BIB

5.5 oz. 100% combed ringspun cotton premium jersey (Heather is 90/10 combed ringspun cotton/polyester). Velcro® brand hook and loop closure. EasyTear™ label. CPSIA compliant tracking label in garment.

**Fit: Infant Unisex**

**Sizes: OSFA**

**Solid Colors:** Black, Butter, Chill, Heather, Light Blue, Mauvelous, Mint, Natural, Navy, Pink, Red, Royal, Titanium, White



### 1003 INFANT CONTRAST TRIM TERRY BIB

10.5 oz. 100% cotton terry. White is sewn with 100% cotton thread. Contrast trim color binding. Velcro® brand hook and loop closure. EasyTear™ label. CPSIA compliant tracking label in garment.

**Fit: Infant Unisex**

**Sizes: OSFA**

**Solid Colors (Bib/Trim):** White/Black, White/Gold, White/Kelly, White/Light Blue, White/Navy, White/Orange, White/Pink, White/Purple, White/Red, White/Royal, White/White





### **1014 INFANT TERRY BURP CLOTH**

6.2 oz. 50% combed ringspun cotton/ 50% polyester terry cloth. Smooth side terry cloth is perfect for easy decoration. Self-fabric binding around edge. Rounded corners. EasyTear™ label. CPSIA compliant tracking label in garment.

**Fit: Infant Unisex**

**Sizes: OSFA**

**Solid Colors:** Ballerina, Black, Key Lime, Navy, White



**1012 INFANT PREMIUM  
JERSEY BANDANA BIB**

5.5 oz. 100% combed ringspun cotton premium jersey.  
2-ply construction. Reversible design. Contrast double  
needle hem stitching. Velcro® brand hook and loop closure.  
EasyTear™ label. CPSIA compliant tracking label in garment.

**Fit: Infant Unisex**

**Sizes: OSFA**

**Solid Colors:** Banana/Key Lime, Chill/Indigo, Kelly/White,  
Lavender/Pink, Mauvelous/Natural, Natural/Titanium,  
Navy/White, Red/White, Royal/White, White/Black





# bath time



SMOOTH FACE  
TERRY CLOTH

**splish  
splash**





**1013 INFANT/TODDLER  
CHARACTER HOOD TOWEL**

6.2 oz 50% combed ringspun cotton/ 50% polyester terry cloth. Smooth side terry cloth is perfect for easy decoration. Self-fabric binding around edge. 2 ply hood and ears. Rounded corners. EasyTear™ label. CPSIA compliant tracking label in garment.

**Fit: Infant Unisex; Toddler Unisex**

**Sizes: OSFA**

**Solid Colors:** Ballerina, Black, Key Lime, Navy, White

**rub-a  
dub-dub**

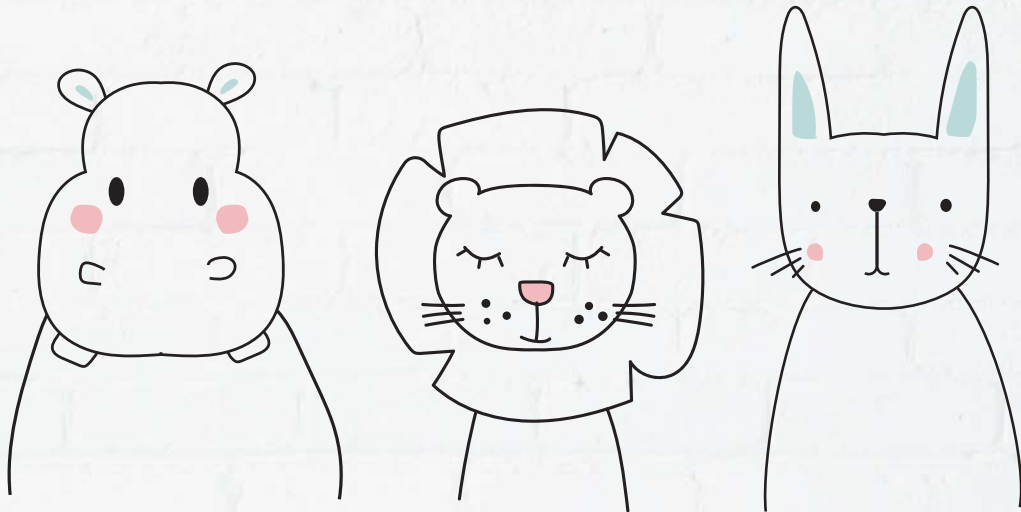




**our hall of  
fame styles**







## size guide

### INFANT UNISEX

SIZE	AGE	HEIGHT (IN)	WEIGHT (LBS)
NEWBORN	0 - 3 M	18 - 21	5 - 9
6 MONTHS	3 - 6 M	22 - 24	10 - 16
12 MONTHS	6 - 12 M	25 - 28	17 - 20
18 MONTHS	12 - 18 M	29 - 31	21 - 24
24 MONTHS	18 - 24 M	32 - 34	25 - 27

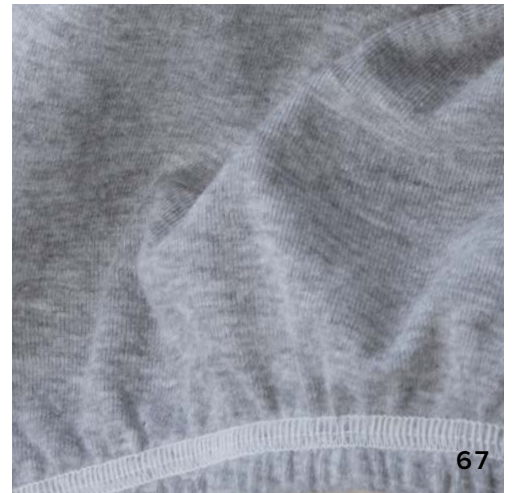
### TODDLER UNISEX

SIZE	AGE	HEIGHT (IN)	WEIGHT (LBS)
2	1 - 2	33 - 35	28 - 30
3	2 - 3	36 - 38	30 - 33
4	3 - 4	39 - 41	34 - 39
5/6	5 - 6	42 - 45	39 - 49
7	6 - 7	46 - 49	50 - 55



## elevated details

reversible designs | textured loop collars |  
2 ply ears | ruffles | bows |  
elbow patches | snap tape | contrast stitching



# color guide

## solids



## stripes





# color guide

## dots



Ballerina-White Dot



Black-White Dot



Black/Red-White Dot



Black/Red-White Dot/White



Heather-White Dot



Heather-White Dot/White



Heather/Heather-Wht Dot/Wht



Navy-White Dot



Raspberry-White Dot



Raspberry/Raspberry-White Dot



Red-White Dot



Red-White Dot/White



Red/Red-White Dot

## colorblock



Ballerina/Mauvelous



Banana/Key Lime



Banana/Yellow



Black/Black



Black/White



Blended White/Heather



Carolina Blue/Vintage Heather



Charcoal/Ballerina



Chill/Indigo



Granite Heather/Black



Granite Heather/Vintage Smoke



Granite Heather/White



Grnite Heather/Natural Heather



Heather/White



Kelly/Red



Kelly/White



Lavender/Pink



Lavender/Purple



Light Blue/Indigo



Light Blue/Navy



Mauvelous/Ballerina



Mauvelous/Natural



Mint/Grass



Natural Heather/Grnite Heather



Natural Heather/Heather



Natural/Brown



Natural/Heather



Natural/Titanium



Navy/Red



Navy/White



Orange/Black



Pink/Red



Pink/Silver



Pink/Vintage Heather



Purple/Lavender



Red/Navy



Red/White



Royal/Red



Royal/White



Vintage Burgundy/Blended White



Vintage Camo/Vintage Smoke



Vintage Green/Blended White



Vintage Green/White



Vintage Heather/Blended White



Vintage Heather/Vintage Navy



Vintage Heather/Vintage Orange



Vintage Heather/Vintage Purple



Vintage Heather/Vintage Red



Vintage Heather/Vintage Royal



Vintage Heather/Vintage Smoke



Vintage Hot Pink/Blended White



Vintage Hthr/Vintage Burgundy



Vintage Navy/Blended White



Vintage Navy/Navy



Vintage Orange/Blended White



Vintage Purple/Blended White



Vintage Red/Blended White



Vintage Red/Red



Vintage Royal/Blended White



Vintage Royal/Royal



Vintage Smoke/Blended White



Vintage Smoke/Granite Heather



Vintage Smoke/Vintage Camo



Vn Heather/Vn Hot Pink



White/Black



White/Light Blue



White/Navy



White/Navy/Red



White/Pink



White/Raspberry



White/Red



White/Royal



White/Titanium



White/Vintage Heather



White/White



Ballerina/Ballerina-Mauv Strp/Mauv



Ballerina/Ballerina-Wht Stripe/Wnt



Heather/Heather-Wht Stripe/Wht



Kelly/Red-White Stripe/Red



Natural/Titanium-Natural Strpe



Lt Blue/Navy-White Stripe/Navy



Navy/Red-White Stripe/Red



Red/Red-White Stripe/White



White/Ballerina-White Stripe

# index

005	Kid's 2-Ply Face Mask <b>(NEW STYLE!)</b>	6
101Z	Infant Long Sleeve Baby Rib Pajama Top	49
102Z	Infant Baby Rib Pajama Pant	49
1002	Infant Bow Tie Bib	58
1003	Infant Contrast Trim Terry Bib	59
1004	Infant Contrast Trim Premium Jersey Bib	59
1005	Infant Premium Jersey Bib	59
1012	Infant Premium Jersey Bandana Bib	61
1013	Infant/Toddler Character Hood Towel	63
1014	Infant Terry Burp Cloth	60
1110	Infant Premium Jersey Blanket	52
1111	Toddler Cape	39
201Z	Toddler Long Sleeve Baby Rib Pajama Top	48
202Z	Toddler Baby Rib Pajama Pant	48
3032	Toddler Retro Ringer Fine Jersey Tee	12
3037	Toddler Football Fine Jersey Tee	20
3080	Toddler Premium Jersey Tee	11
3301	Toddler Cotton Jersey Tee	38
3302	Toddler Long Sleeve Fine Jersey Tee	12
3311	Toddler Long Sleeve Cotton Jersey Tee	38
3316	Toddler Girls' Fine Jersey Tee	12
3317	Toddler Fleece Sweatshirt	44
3321	Toddler Fine Jersey Tee <b>(NEW COLORS!)</b>	10
3322	Infant Fine Jersey Tee <b>(NEW COLORS!)</b>	11
3326	Toddler Pullover Fleece Hoodie	42
3329	Toddler Girls' Ruffle Neck Fine Jersey Tee	13
3330	Toddler Baseball Fine Jersey Tee	21
3346	Toddler Zip Fleece Hoodie	43
3379	Toddler Harborside Mélange French Terry Crew Neck w/ Elbow Patches	45
3391	Toddler Harborside Mélange Jersey Tee	11
3400	Infant Baby Rib Tee	54
3401	Infant Cotton Jersey Tee	38
3446	Infant Zip Fleece Hoodie	43
4400	Infant Baby Rib Bodysuit	27
4406	Infant Baby Rib Layette	53
4407	Infant Baby Rib Bow Tie Bodysuit	31
4408	Infant Premium Jersey Wearable Blanket	52
4411	Infant Long Sleeve Baby Rib Bodysuit	34
4412	Infant Baby Rib Coverall	34
4418	Infant Character Hood Bodysuit	30
4422	Infant Tutu Baby Rib Bodysuit	35
4424	Infant Fine Jersey Bodysuit <b>(NEW COLORS!)</b>	28
4429	Infant Ruffle Fine Jersey Bodysuit	35
4430	Infant Baseball Fine Jersey Bodysuit	21
4432	Infant Retro Ringer Fine Jersey Bodysuit	32
4437	Infant Football Fine Jersey Bodysuit	20
4451	Infant Baby Rib Cap	54
4453	Infant Baby Rib Bow Cap	55
4480	Infant Premium Jersey Bodysuit	33
4486	Infant Premium Jersey T-Romper	33
4491	Infant Harborside Mélange Jersey Bodysuit	29
5320	Infant Baby Rib Dress	16
5323	Toddler Baby Rib Dress	16
5379	Toddler Girls' Harborside Mélange French Terry Twirl Dress	17
8310	Infant Baby Rib Pant	54

# shop by fabric

## HARBORSIDE MÉLANGE

3379, 3391, 4491, 5379

## FINE JERSEY

3032, 3037, 3302, 3316, 3321, 3322,  
3329, 3330, 4418, 4424, 4429,  
4430, 4432, 4437

## PREMIUM JERSEY

1002, 1004, 1005, 1012, 1110,  
3080, 4408, 4480, 4486

## BABY RIB

101Z, 102Z, 201Z, 202Z, 3400,  
4400, 4406, 4407, 4411, 4412,  
4422, 4451, 4453, 5320, 5323, 8310

## TERRY CLOTH

1003, 1013, 1014

## COTTON JERSEY

005, 3301, 3311, 3401

## FLEECE

3317, 3326, 3346, 3446

## POLYESTER

1111





