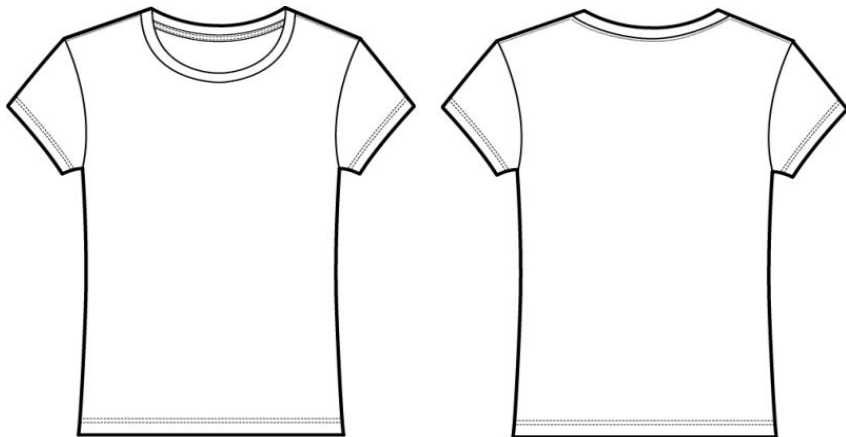


# BELLA + CANVAS®

## MEASUREMENT SPECIFICATION REPORT



STYLE # 6650 - THE POLY-COTTON TEE

### FABRICATION

52% COMBED AND RING-SPUN COTTON, 48% POLYESTER

### Points of Measurement (inches)

|                      | S      | M      | L      | XL     | 2XL    |
|----------------------|--------|--------|--------|--------|--------|
| Chest                | 16     | 16 3/4 | 17 3/4 | 18 3/4 | 19 3/4 |
| Body Length From HPS | 25 3/4 | 26 1/4 | 26 7/8 | 27 1/2 | 28 1/8 |

Disclaimer: Please note that the above sizing chart is subject to change. For more detailed information, please contact a Bella + Canvas Customer Service Representative.

# BE DIFFERENT

AIRLUME JERSEY | NO SWEATSHOPS | WRAP CERTIFIED | RETAIL QUALITY



BELLACANVAS.COM | 6670 FLOTILLA STREET | LOS ANGELES, CA 90040 | 855 363 2200 | SALES@ BELLACANVAS.COM