

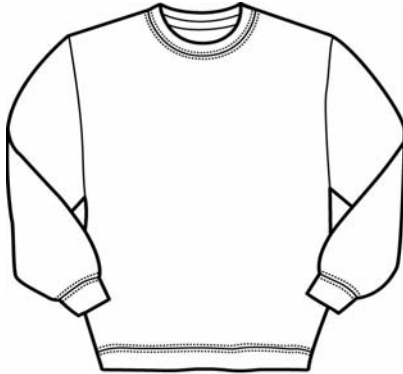


XL 50% COTTON  
50% POLYESTER  
Made in Honduras

## STYLE 18000

### Heavy Blend

#### Adult Crewneck Sweatshirt



<b>Weight</b>	7.75 oz per sq yd	
<b>Content</b>	50% cotton /50% polyester preshrunk yarn	
<b>Features</b>	Air jet yarn = softer feel and no pilling Set-in sleeves Double needle stitching Double needle cuffs 1 x 1 athletic rib with spandex Quarter-turned to eliminate center crease	
<b>Sizes</b>	S - 5XL	
<b>Case Packs</b>	S - 3XL	3 dozen
	4XL - 5XL	1 dozen
<b>Colors</b>	32	
<b>SKU's</b>	256	

### Specifications

Size	Width (A)	Length (B)	CB Sleeve (C)
Small	20"	26"	33"
Medium	22"	27"	34"
Large	24"	28"	35"
X-Large	26"	29"	36"
2X-Large	28"	30"	37"
3X-Large	30"	31"	38"
4X-Large	32"	32"	39"
5X-Large	34"	33"	40"
Tol.	+/- 0.75"	+/- 1"	+/- 1"

