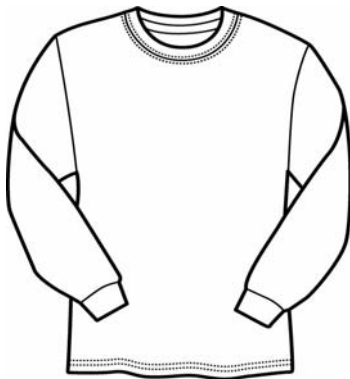




STYLE 5400

Heavy Cotton

Adult Long Sleeve T-Shirt



Weight	5.3 oz per sq yd
Content	100% cotton preshrunk jersey knit (see colors for exceptions)
Features	Seamless double needle 7/8" collar Taped neck and shoulders Rib cuffs Double needle bottom hem Quarter-turned to eliminate center crease
Sizes	S - 2XL
Case Packs	S - 2XL 6 dozen
Colors	13
SKU's	65

Specifications

Size	Width (A)	Length (B)	CB Sleeve (C)
Small	18"	28"	33.5"
Medium	20"	29"	35"
Large	22"	30"	36.5"
X-Large	24"	31"	38"
2X-Large	26"	32"	39.5"
Tol.	+/- 0.75	+/- 1"	+/- 1"

