



## STYLE #6137 YOUTH FOOTBALL FINE JERSEY TEE

4.5 oz. 100% combed ringspun cotton fine jersey (CVC Colors are 60% combed ringspun cotton/40% polyester). Ribbed collar. Shoulder-to-shoulder self-fabric back neck tape. Contrast topstitched self-fabric sleeve stripes. Coverstitched front and back yoke. Double needle sleeves and bottom hem. Side seam construction. EasyTear™ label. CPSIA compliant tracking label in side seam.

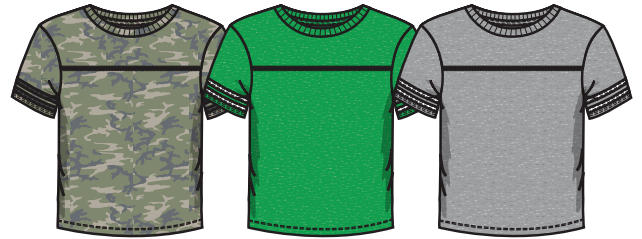
**Fit:** Youth Unisex  
**Sizes:** XS, S, M, L, XL



BLACK/  
WHITE

GRANITE  
HEATHER/  
VINTAGE  
SMOKE

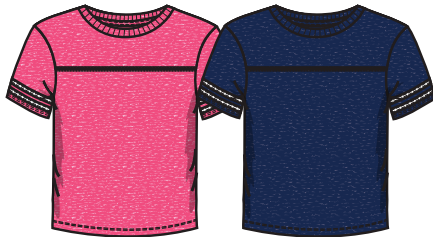
NATURAL  
HEATHER/  
GRANITE  
HEATHER



VINTAGE  
CAMO/  
VINTAGE  
SMOKE

VINTAGE  
GREEN/  
BLENDED  
WHITE

VINTAGE  
HEATHER/  
BLENDED  
WHITE



VINTAGE  
HOT PINK/  
BLENDED  
WHITE

VINTAGE  
NAVY/  
BLENDED  
WHITE



VINTAGE  
RED/  
BLENDED  
WHITE

VINTAGE  
ROYAL/  
BLENDED  
WHITE

VINTAGE  
SMOKE/  
BLENDED  
WHITE

WHITE/  
BLACK

### Finished Measurements (Inches):

Size:	XS	S	M	L	XL	TOL +/-
Body Length:	19	21 1/2	23	25	26 1/2	1
Body Width:	14	16	18	19	20	1/2
Sleeve Length:	5 1/4	6 1/4	6 1/2	7	7 1/2	1/2

### Box Details:

Sizes:	XS-XL
Box Size:	14x14x10
Qty Per Box:	3 Dozen

### Print Area:

Smallest Length:	18"
Smallest Width:	13"
Largest Length:	25"
Largest Width:	19"

Disclaimer: Please note that the above sizing chart is subject to change. For more detailed information, please contact an LAT Apparel Customer Service Representative.  
www.latapparel.com | 137 Leo Taylor Lane | Ball Ground, GA 30107