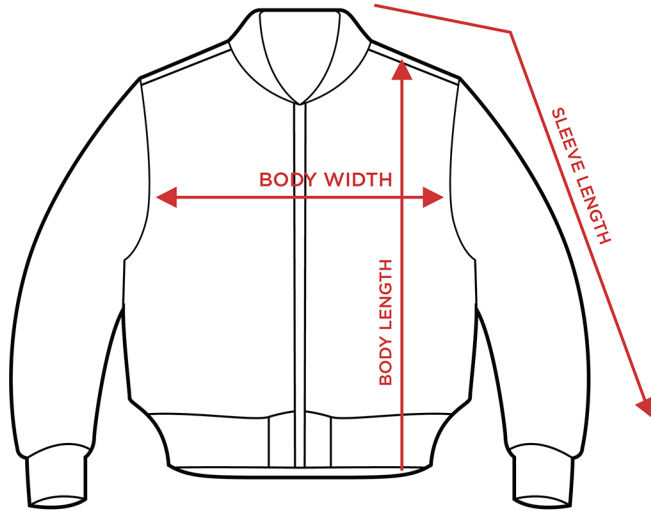


NYLON BOMBER JACKET



BODY WIDTH

Lay garment flat. 1" below the armhole flat measure the garment across the chest.

BODY LENGTH

Lay garment flat. Measure from HPS (highest point of shoulder).

SLEEVE LENGTH

Lay garment flat (face down). Measure from center back neck to outer edge of shoulder seam, then along outer edge to sleeve end.

**3.1 oz shell /
5.3 oz lining**

DESCRIPTION	S	M	L	XL	2XL	3XL
BODY LENGTH FROM HPS	28	28	28.5	29	30	31
CHEST WIDTH 1" BELOW ARMHOLE	22	23	24	25.25	26.5	27.5
SLEEVE LENGTH FROM CENTER BACK INC CUFF RIB	35	36	37	38.25	39.5	40.75