

# PRIM + PREUX



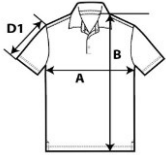
## PP1990

### Adult Vision Polo



#### DETAILS

<b>Weight</b>	5.3 Oz/SqYd
<b>Content</b>	95% Cotton, 5% Spandex
<b>Features</b>	Stretch modern classic fit UPF 30+ (white is not applicable) Woven label Self fabric collar Clean finished placket with single needle topstitch Color-matched trim in the inside of placket 3 color-matched buttons Rolled forward topstitched shoulder Side seam with self fabric face side vents Decorative logo side tab on left side seam Double needle sleeve and bottom hems
<b>Sizes</b>	XS-4XL
<b>Case Packs</b>	XS - 3XL    2 DOZEN 4XL        1 DOZEN
<b>Colors</b>	8
<b>SKU's</b>	64



#### SPECIFICATIONS

Inches	Tol-	Tol+	XS	S	M	L	XL	2XL	3XL	4XL
<b>Chest (A)</b>	0.500	0.500	16.500	18.000	20.000	22.000	24.000	26.000	28.000	30.000
<b>Length from HPS (B)</b>	0.500	0.500	27.500	28.500	29.500	30.500	31.500	32.500	33.500	34.500
<b>Sleeve length (Center cap) (D1)</b>	0.250	0.250	9.250	9.500	9.750	10.000	10.500	11.000	11.500	12.000

#### XS-4XL

COLORS	Code	Comments
Black	76G	
Blossom	87G	
Legion Blue	39G	
Navy	79G	
Paragon	41G	
Plum	38G	
Red	80G	
White	030	

#### CHANGES

Additions	
XS, S, M, L, XL, 2XL, 3XL, 4XL	Black, Blossom, Legion Blue, Navy, Paragon, Plum, Red, White
Total Net Change 64 SKU's	