

# PRIM + PREUX

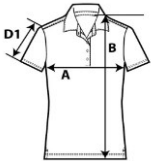


## PP1991L

### Women's Vision Polo

#### DETAILS

<b>Weight</b>	5.3 Oz/SqYd
<b>Content</b>	95% Cotton, 5% Spandex
<b>Features</b>	Stretch modern classic fit <input type="checkbox"/> UPF 30+ (white is not applicable) <input type="checkbox"/> Woven label <input type="checkbox"/> Self fabric collar <input type="checkbox"/> Clean finished reversed placket with single needle topstitch <input type="checkbox"/> Color-matched trim in the inside of placket <input type="checkbox"/> 4 color-matched buttons <input type="checkbox"/> Rolled forward topstitched shoulder <input type="checkbox"/> Side seam with self fabric face side vents <input type="checkbox"/> Decorative logo side tab on left side seam <input type="checkbox"/> Double needle sleeve and bottom hems
<b>Sizes</b>	XS-3XL
<b>Case Packs</b>	XS - 3XL 2 DOZEN
<b>Colors</b>	8
<b>SKU's</b>	56



#### SPECIFICATIONS

Inches	Tol-	Tol+	XS	S	M	L	XL	2XL	3XL
<b>Chest (A)</b>	0.500	0.500	16.000	17.500	19.500	21.500	23.500	25.500	27.500
<b>Length from HPS (B)</b>	0.500	0.500	24.250	25.250	26.250	27.250	28.250	29.250	30.250
<b>Sleeve length (Center cap) (D1)</b>	0.250	0.250	6.500	6.750	7.000	7.500	8.000	8.500	9.000

#### XS-3XL

COLORS	Code	Comments
Black	76G	
Blossom	87G	
Legion Blue	39G	
Navy	79G	
Paragon	41G	
Plum	38G	
Red	80G	
White	030	

#### CHANGES

<b>Additions</b>	
XS, S, M, L, XL, 2XL, 3XL	Black, Blossom, Legion Blue, Navy, Paragon, Plum, Red, White
Total Net Change 56 SKU's	