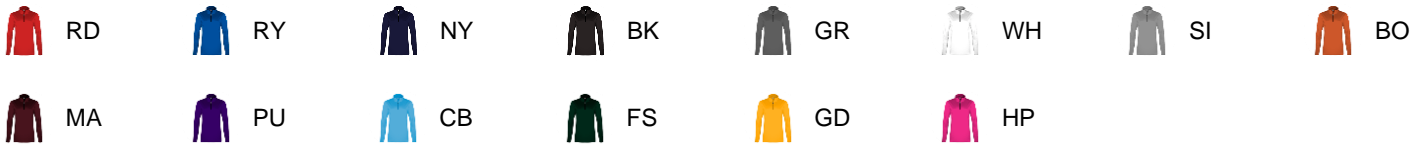




# #560200 WOMEN'S C2WOMEN'S1/4ZIP

- 100% Polyester moisture management/antimicrobial performance fabric
- Self-fabric collar with 8" locking zipper
- Double-needle hem

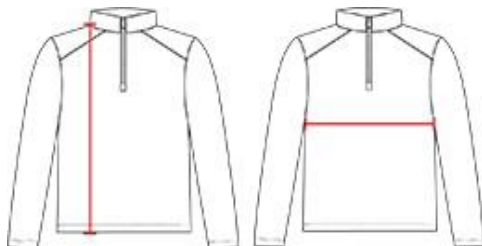
## COLORS



## SPECIFICATIONS

	XS	S	M	L	XL	2XL
<b>Piece Weight</b> measured in pounds	0.55	0.55	0.55	0.55	0.55	0.55
<b>Body Length</b> Measured in inches	25	26	27	28	29	30
<b>Chest Width</b> Measured in inches	16 ½	17 ½	19	21	23	25
<b>Case Count</b> # of units per case	72	72	72	72	72	72

## HOWTOMEASURE



These product specifications reference a product's measurements. For sizing information and guidance, please reference our sizing charts.

### BODYLENGTH

Measured on the front from the shoulder/neck intersection to the bottom of the garment.

### CHESTWIDTH

Measured across the chest, 1" below the armhole seam.